




Pyrogel®



PIPE INSULATION
**INSTALLATION
MANUAL**

FOR DISTRICT ENERGY STEAM DISTRIBUTION SYSTEMS

REVISION 1.1

aspen|aerogels®

Contents

(Click below to jump to section)

Safety First	3
Material Handling	3
Preparation and Storage	4
Optimal Work Setup	5
Single Wrap Pipe	6
Double Wrap Pipe	7
Multi-Layer Wrap Pipe	8
Small Bore Pipe	9
Pipe Fittings	10
Valves and Flanges	11
45- and 90-Degree Elbows	15
Cutting Charts	20
Pyrogel® XTE 5 mm Blanket Cut Chart (cm), 26	
Pyrogel® XTE 5 mm (0.2 in) Blanket Cut Chart (inches), 27	
Pyrogel® XTE 10 mm Blanket Cut Chart (cm), 28	
Pyrogel® XTE 10 mm (0.4 in) Blanket Cut Chart (inches), 29	
Pyrogel® Insulation Cladding Cut Chart (mm), 30	
Pyrogel® Insulation Cladding Cut Chart (inches), 31	
Pyrogel® Miter Cut Chart (mm), 32-33	
Pyrogel® Miter Cut Chart (inches), 34-35	

Aspen Aerogels® recognizes that performance of our state-of-the-art aerogel insulation materials depends on the total thermal integrity of our system. Therefore, we have developed recommended guidelines for installing Pyrogel® flexible blanket materials.

All of the procedures described in this manual have been field-proven in conjunction with installation partners.

We are constantly striving to develop new application procedures and insulation systems to make our products stand above our competition with quicker delivery times, simpler logistics, and more reliable installation.

We stand behind our products and are willing to work with you to develop application procedures to suit your project-specific execution plan.

For specialized training or recommendations regarding our application procedures, call 508-691-1111, visit info.aerogel.com/contact, or scan below with mobile device QR reader.



Contact Us

This installation guide is intended for District Energy steam lines operating at temperatures up to 750°F (400°C). For systems exceeding this operating temperature please contact Aspen Aerogels for additional installation guidelines.

Safety First

Pyrogel materials are engineered with safety and performance as our top priorities. Aspen has performed extensive EH&S testing and found our materials to be safe. Our Pyrogel insulation products are made of amorphous silica impregnated into a non-woven flexible fabric substrate. Amorphous silica is not considered to be a health hazard and, according to the U.S. EPA, "there should be no concerns for human health." The dust from our material is rated by the U.S. Occupational Safety and Health Administration (OSHA) as a "nuisance dust." The silica used in our products is produced synthetically, not mined, and as such contains no crystalline silica.

Handling of Pyrogel blankets will produce dust. Workplace exposure to all dusts should be controlled with standard industrial hygiene practices. Pyrogel dust exposure may produce a sensation of dryness to skin and irritation to eyes, skin, and respiratory track. For worker comfort when working with Pyrogel, we recommend the use of dust masks, safety eyewear, and work gloves. Pyrogel dust can be washed from the skin and clothing using soap and water. Please follow the recommended safety and handling guidelines outlined in our Safety & Handling Guidelines manual, which is available on request. For complete health and safety information, please see our MSDS sheets.

Material Handling

Pyrogel insulations when shipped in full rolls are typically 1.5 m (60 in) wide weighing up to 180 kg (400 lb) per roll. Rolls can be moved manually with the use of a metal pipe or wooden 2x4 placed through the center of the roll and picked up from either end, or by using a pallet jack or forklift. Rolls can also be purchased in crates. Rolls should always be placed or stacked on their sides and should never be positioned upright on their ends as this may damage the exposed ends of the roll.



Preparation and Storage

Pyrogel insulation materials should be stored in a clean, dry and protected environment. If material is stored in an outdoor setting, it should be placed on pallets and thoroughly covered with a waterproof tarp or plastic sheeting. Although the Pyrogel material is hydrophobic, all necessary measures should be taken to protect it from the weather.

To prepare for installation:

- Ensure that pressure testing of piping and fittings has been completed prior to installing insulation.
- Ensure that all pipe and fitting surfaces over which insulation is to be installed are clean and dry.
- Ensure that insulation is clean, dry, and in good mechanical condition. Wet, dirty, or damaged insulation is not acceptable for installation.
- Determine pipe size, pipe length, and number of layers of Pyrogel blanket required for the application.

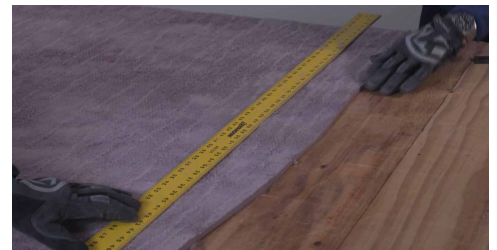
NOTE: For more information on above sections please contact Aspen Aerogels technical services.

Optimal Work Setup

To achieve the most productive work environment for use with Pyrogel insulations we suggest the following setup.

BULK CUTTING AREA

This area will be used for cutting Pyrogel materials from full rolls into lengths required for the application, as well as cutting any preformed parts required to ease the installation process. This area should be setup in a covered and protected area. This area should contain several tables to accommodate the roll width and cutting length required for each component being worked. The roll of Pyrogel material should be located at the front of the table where it can be placed on a roller rack with a tube placed through the roll. Please refer to the Recommended Cutting Tools chart below for suggested tools for this application. Parts should be placed on pallets and covered, bagged, or wrapped in plastic before bringing to work area.



WORK AREA

Ideally the material should be placed as close to the work area as possible. Remove the materials from the packaging and distribute to the work location. Please refer to the cutting tools chart below for suggested tools for field applications.

Material	Cutting Tool (FIELD or SHOP)					
	Scissors	Box Cutter	Pizza Wheel/ Electric	Tin Snips	Slitter	Hand Shear
Pyrogel®	FIELD	FIELD	FIELD	FIELD	SHOP	SHOP

Single Wrap Pipe

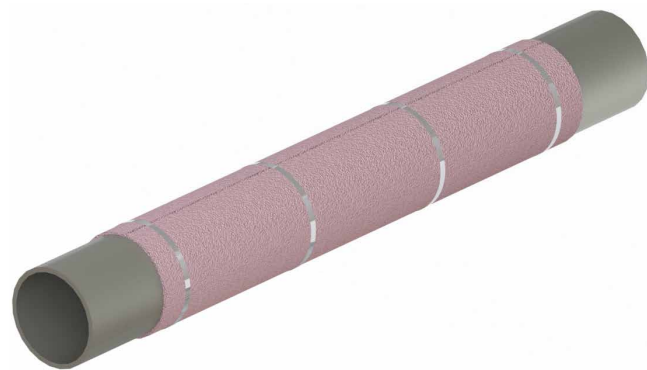
1. Cut Pyrogel blanket to the length required for a complete wrap. The cut length may be determined by either wrapping a scrap piece around the pipe and marking the place where it overlaps, or consulting the cutting charts on pages 26-35. Either a butt joint or lap joint is acceptable for the longitudinal seam.



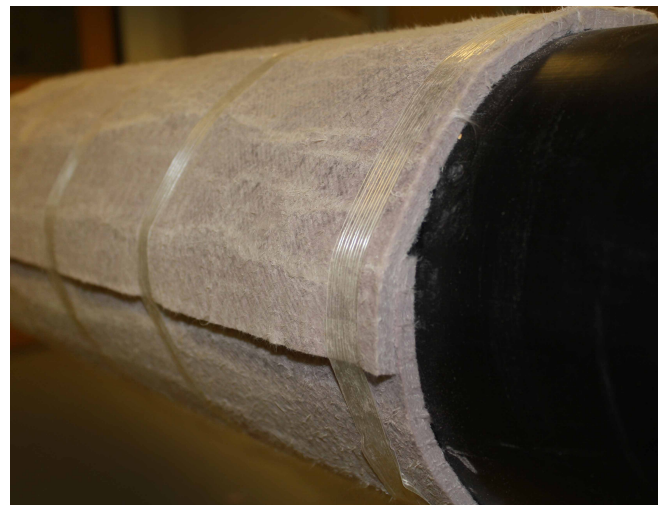
2. Place the Pyrogel on the pipe and wrap around the circumference of the pipe. The starting edge of the Pyrogel can be held in place by hand or with a strip of spray adhesive. The use of spray adhesives is limited to application temperatures below 250°C (480°F), and should never be used on live, operating equipment.



3. Once wrapped around the pipe, the Pyrogel may be held in place using tape, wire, adhesive spray, or banding. The use of tape and spray adhesives is limited to application temperatures below 250°C (480°F).



4. Completed assembly showing lap joint. It is good practice to orient the overlap with a downward-facing watershed.

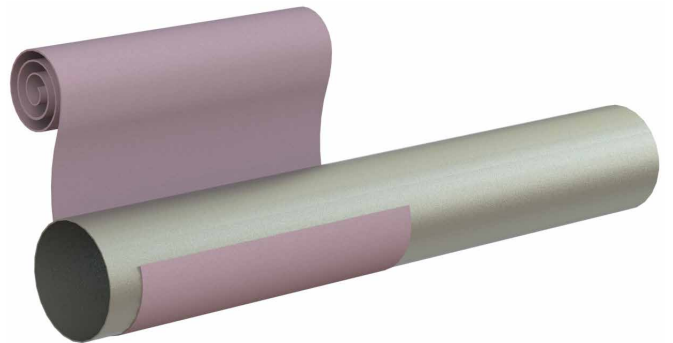


Double Wrap Pipe

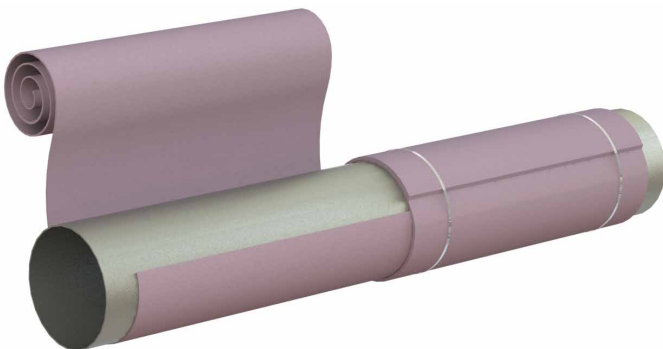
1. Cut the Pyrogel blanket to the length required for a complete wrap. The cut length may be determined by either wrapping a scrap piece around the pipe and marking the place where it overlaps, or consulting the cutting charts on pages 26-35. Either a butt joint or lap joint is acceptable for the longitudinal seam.



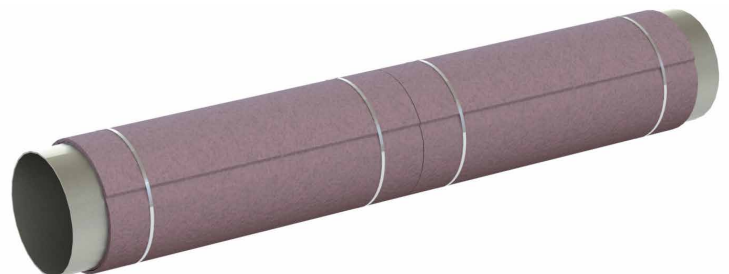
2. Align the leading edge of the Pyrogel with the long axis of the pipe and wrap around the pipe. The starting edge of the Pyrogel can be held in place by hand or with a strip of spray adhesive. The use of spray adhesives is limited to application temperatures below 250°C (480°F), and should never be used on live, operating equipment.



3. Overlap and continue around the circumference to achieve the double-layer application.



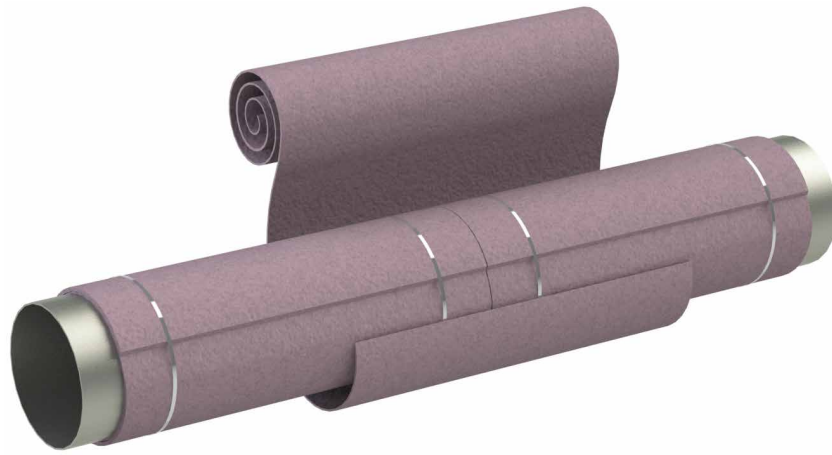
4. Once wrapped around the pipe, the Pyrogel may be held in place using tape, wire, adhesive spray, or banding. The use of tape and spray adhesives is limited to application temperatures below 250°C (480°F).



5. Install cladding in typical fashion and seal with owner-approved sealant.

Multi-Layer Wrap Pipe

1. For applications that require the use of more than two layers of Pyrogel blanket, the suggested procedure follows the same steps as the double-layer application, overlapping the circumferential and longitudinal joints.



2. Once wrapped around the pipe, the Pyrogel may be held in place using tape, wire, adhesive spray, or banding. The use of tape and spray adhesives is limited to application temperatures below 250°C (480°F).



3. Install cladding in typical fashion and seal with owner-approved sealant.



Small Bore Pipe - 15 to 100 mm (1/2 to 4 in) NPS

For piping smaller than 100 mm (4 in) NPS, we suggest the use of V-grooved, cut-to-length materials. Another option is to use 5 mm (0.2 in) materials, as they are more flexible than their 10 mm (0.4 in) counterparts. This can be either wrapped in the traditional fashion, or spiral wound onto the pipe with a 50% overlap. Contact Aspen Aerogels at 508-691-1111 or info.aerogel.com/contact for details on local suppliers of pre-fabricated elbows and accessories.

V-GROOVE

- 1.** V-grooved pipe cover comes pre-cut to the particular pipe size and insulation thickness so that each layer comes to a perfect, butted closure.
- 2.** For multi-layer applications, align the grooves for better laydown, but stagger the longitudinal seams.



SPIRAL WRAP

- 1.** For spiral-wrap installation, strip materials should generally be 5 mm (0.2 in) thick, 50 to 75 mm (2 to 3 in) wide, and provided in rolls measuring 3 to 7.5 m (10 to 25 ft) long.
- 2.** Place the end of the Pyrogel strip on the pipe and wrap around the circumference of the pipe, overlapping each wrap by 50 percent in a corkscrew pattern. The beginning of the strip can be held in place by hand, or with spray adhesive, tape, or wire.
- 3.** Once wrapped around the pipe, the Pyrogel may be held in place using tape, wire, or adhesive spray.
- 4.** Repeat this same procedure for subsequent layers.

Pipe Fittings

PIPE ENDS

Install the Pyrogel blanket past the pipe end to the same distance as required for the thickness of the insulation.

Cut plugs from the Pyrogel to the diameter of the opening and install to match the thickness.

REDUCERS

Install the Pyrogel blanket to the same thickness as would be required for the piping using the same layout pattern as would be required for the metal cladding less the required overlaps.

Install each layer in a staggered fashion.

TEES

Install the Pyrogel blanket using the same techniques as would be used for installing the cladding. Contact Aspen Aerogels at 508-691-1111 or info.aerogel.com/contact for details on local suppliers of pre-cut tees.



PIPING SHOES

Install the Pyrogel blanket around the pipe adjacent to the pipe shoe and make a slit the length of the shoe.

Slide Pyrogel through the shoe area and continue wrapping the Pyrogel on the other end of the shoe area.

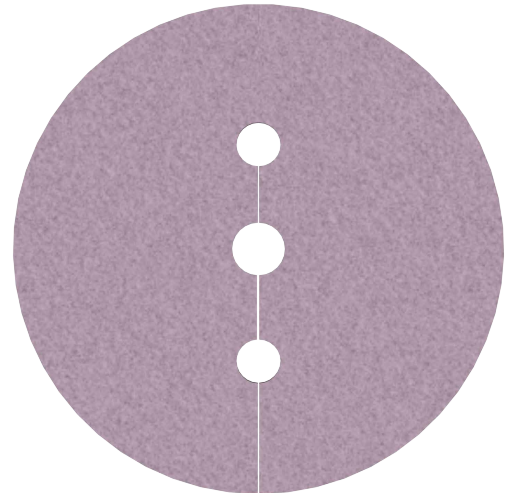
For some shoe types that have a welded section through the center, it may be necessary to apply Pyrogel from both ends.

Contact Aspen Aerogels at 508-691-1111 or info.aerogel.com/contact for details on local suppliers Pyrogel® and Cryogel® insulated pipe shoes.

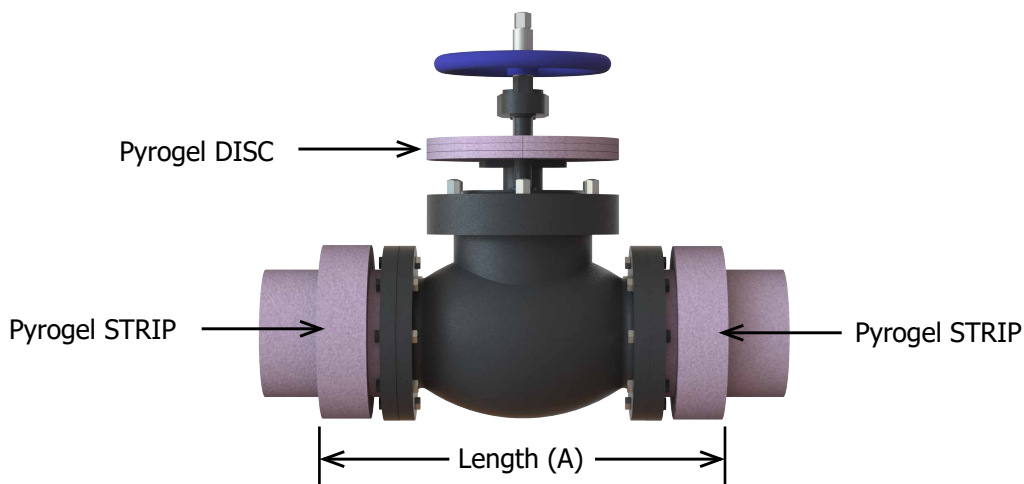
Valves and Flanges

This section gives the general techniques for insulating valves. Because of the variety in valves shapes and designs, some modifications to these instructions may be necessary.

- 1.** Unless the finished Pyrogel thickness could obstruct the bolt pattern on the flange, insulate the pipe all the way up to the flange face.
- 2.** Wrap a strip of Pyrogel over the insulated pipe portion to achieve the same diameter as the flange.
- 3.** Cut the disc to the same size as the bonnet end if insulation is required on the bonnet section.

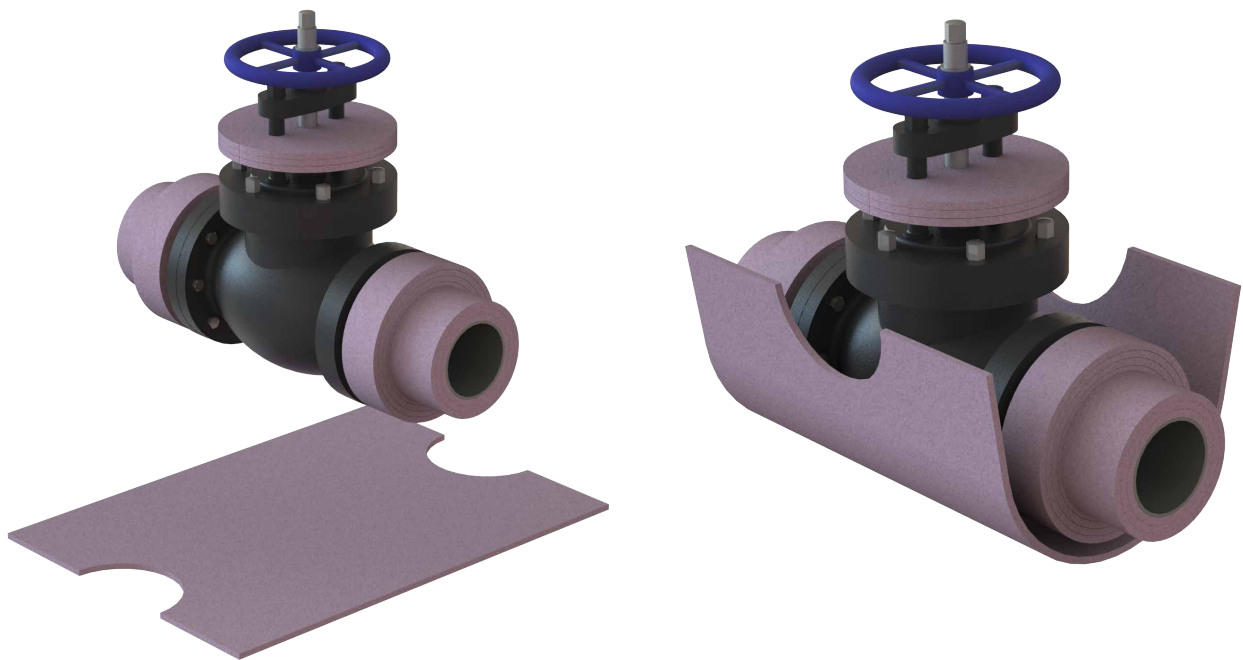
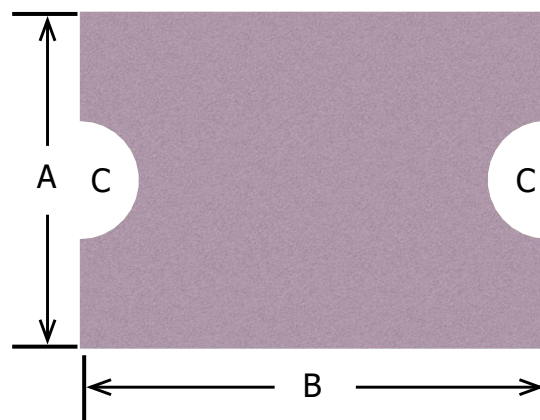


- 4.** Measure the distance between the two outer faces of the Pyrogel strips.



Valves and Flanges

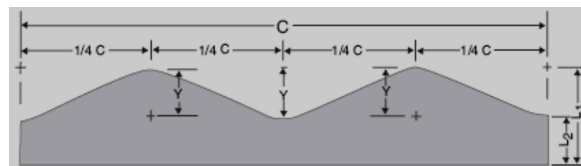
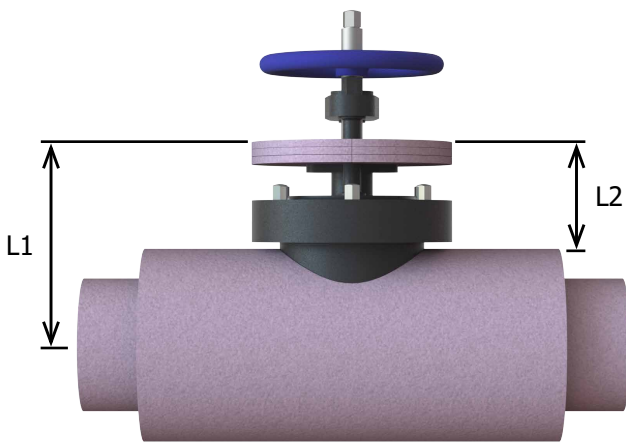
5. Transfer length "A" and circumference "B" to Pyrogel sheet and mark the cutouts for the bonnet neck "C". Move the cutout on each wrap of Pyrogel to achieve stagger, and slide over handle section to achieve stagger.



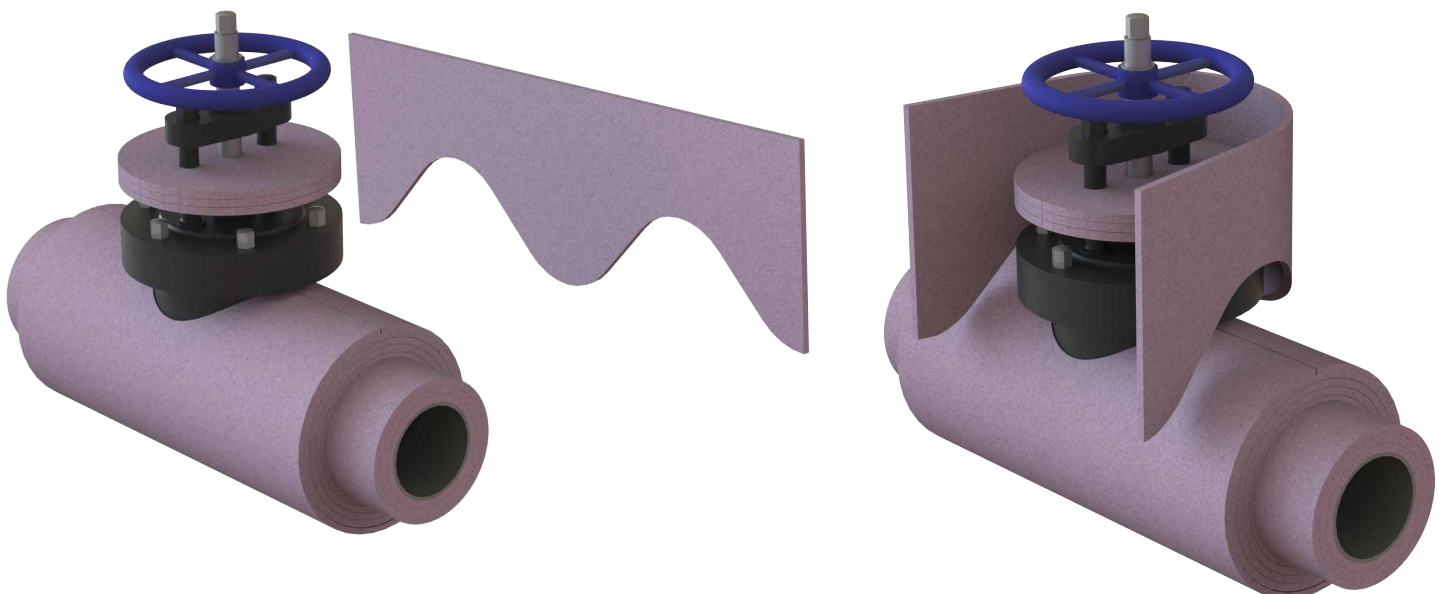
6. The Pyrogel sheet is now wrapped around the valve body followed by any additional layers with joints staggered. Attachment of the Pyrogel may be done with tape, wire, adhesive spray, or banding.

Valves and Flanges

7. The last pieces will insulate the bonnet area if required. The bonnet insulation of Pyrogel is cut to the size of $C \times L1$, then marked in quarters. Next, the scalloped edge of the insulation is determined by swinging an arc from each point marked +. The radius of the arc is equal to Y . These areas are connected with straight lines to give a smooth scalloped edge.

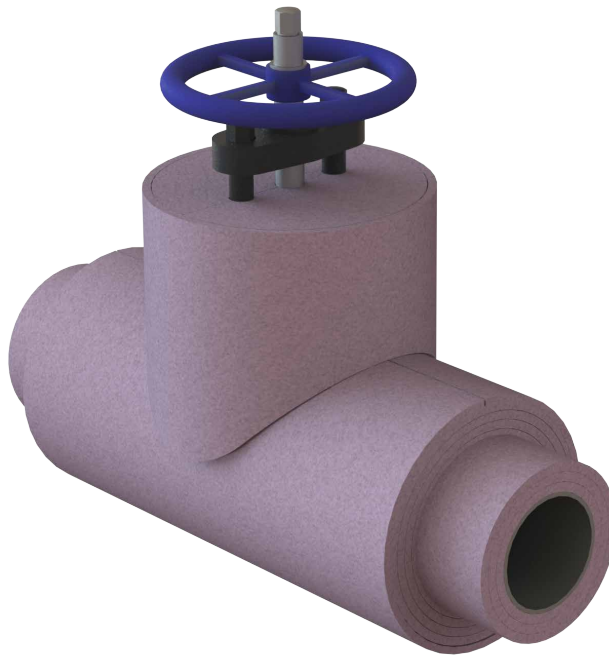


C	Overall length determined by wrapping a strip of Pyrogel around the bonnet flange and marking where the ends meet
L1	Distance is from the outer surface of the Pyrogel disc to the approximate middle of the valve body insulation
L2	Distance is from the outer surface of the Pyrogel disc to the closest surface of the valve body insulation
Y	Difference between L1 and L2



Valves and Flanges

8. Once installation of the Pyrogel insulation layers is complete, the finished valve should resemble below.



9. Install cladding over Pyrogel.

10. Pyrogel-lined removable metal or blanket covers may also be an option for valves and flanges.



45- and 90-Degree Elbows

Suggested Elbow Chart				
Pipe Size (NPS)		Elbow Type		
mm	inches	Pre-Cut	Gored	Stove Pipe
15 - 40	1/2 - 1 1/2	√		√
50 - 150	2 - 6	√	√	
200 - 300	8 - 12	√	√	
350 - 600	14 - 24	√	√	
650 - 900	26 - 36	√	√	
950 - 1,200	38 - 48	√	√	

The instructions on the following pages cover three types of elbows available for use with Pyrogel materials and installation suggestions.

Contact Aspen Pyrogels at 508-691-1111 or info.aerogel.com/contact for details on local suppliers of pre-fabricated elbows and accessories.

45- and 90-Degree Elbows

SINGLE-PIECE ELBOW FITTINGS

Pre-fabricated elbows for piping NPS 200 mm (8 in) and smaller are based on a reverse gore-style pattern that gathers in the throat and is closed along the heel. Larger elbows are constructed of individual gores that get applied one at a time in the field, with the seam located in the throat.



1. Place the middle of the fitting along the inside (throat) of the pipe fitting.



45- and 90-Degree Elbows

2. Tightly wrap material around to the heel, aligning the seam with the centerline of the fitting.



3. It is important that the Pyrogel material is tight to the elbow. Work excess material around the fitting towards the back side of the fitting until the butt joint is closed tightly. Apply tape, wire, or outward-clenching staples to secure each finger.



45- and 90-Degree Elbows

4. Once all fingers have been secured, push material from both ends of the fitting cover to ensure all gore seams are tightly closed.

5. Apply all subsequent layers in a similar fashion. Note that the seams in some layers are specifically engineered to not line up with the ones beneath it. Also note that in multi-layer fittings, the inner layers will often have an extended tangent to provide a ship-lap joint for the adjacent line insulation.

6. Install cladding.



45- and 90-Degree Elbows

GORED ELBOW FITTINGS

This style of elbow can be cut by the contractor using the same principles that are used to fabricate metal gored elbow, minus the overlaps.

Cut the Pyrogel blanket to the required length and cut as per the gore pattern. Install each layer, staggering the seams where possible. This can be achieved by slitting one of the gored sections down the center to create half a gore. This half section will be used for the starter and finisher of the staggered layer. The gored elbow may also be achieved by separating the pre-cut elbows and installing one gore at a time.



STOVE PIPE

We recommend that this style of elbow only be used on small bore piping where the fabrication of the above elbow styles can not be done due to limited elbow throat space. In order to fabricate this elbow, we recommend that the pre-formed pipe covering be cut at a 45-degree angle with the sections adjoined in the elbow to form the 90-degree elbow.

Pyrogel® XTE 5 mm Blanket Cut Chart (cm)

NPS (mm)	Material Stretchout (cm)											
	Number of Layers											
	1	2	3	4	5	6	7	8	9	10	11	12
15	12.4	25.4	41.5	60.8	83.2	108.7	137.4	169.3	204.2	242.4	283.6	328.0
20	14.1	28.7	46.5	67.5	91.6	118.8	149.2	182.7	219.3	259.1	302.1	348.1
25	16.2	33.0	52.9	75.9	102.1	131.5	164.0	199.6	238.4	280.3	325.3	373.5
32	18.9	38.5	61.1	86.9	115.9	148.0	183.2	221.6	263.1	307.8	355.6	406.5
40	20.8	42.3	66.9	94.6	125.5	159.5	196.6	236.9	280.4	326.9	376.7	429.5
50	24.6	49.9	78.2	109.8	144.4	182.2	223.2	267.3	314.5	364.8	418.4	475.0
65	28.6	57.8	90.2	125.7	164.4	206.2	251.1	299.2	350.4	404.7	462.2	522.9
80	33.6	67.8	105.2	145.7	189.3	236.1	286.0	339.1	395.3	454.6	517.1	582.7
90	37.6	75.8	117.1	161.6	209.3	260.0	313.9	371.0	431.2	494.5	561.0	630.6
100	41.6	83.8	129.1	177.6	229.2	284.0	341.9	402.9	467.1	534.4	604.9	678.5
115	45.6	91.8	141.1	193.5	249.2	307.9	369.8	434.8	503.0	574.3	648.8	726.4
125	50.1	100.7	154.6	211.5	271.6	334.9	401.2	470.8	543.4	619.2	698.2	780.3
150	58.5	117.7	180.0	245.4	314.0	385.7	460.6	538.6	619.7	704.0	791.4	882.0
200	74.5	149.6	227.9	309.3	393.8	481.5	572.3	666.2	763.3	863.6	967.0	1073.5
250	91.5	183.5	278.7	377.1	478.6	583.2	691.0	801.9	915.9	1033.1	1153.5	1277.0
300	107.4	215.4	326.6	440.9	558.4	679.0	802.7	929.6	1059.6	1192.7	1329.0	1468.5
350	117.4	235.4	356.5	480.8	608.2	738.8	872.5	1009.4	1149.3	1292.5	1438.8	1588.2
400	133.4	267.3	404.4	544.7	688.0	834.6	984.2	1137.0	1293.0	1452.1	1614.3	1779.7
450	149.3	299.2	452.3	608.5	767.8	930.3	1095.9	1264.7	1436.6	1611.7	1789.9	1971.2
500	165.3	331.2	500.2	672.3	847.6	1026.1	1207.7	1392.4	1580.2	1771.3	1965.4	2162.7
550	181.2	363.1	548.0	736.2	927.4	1121.8	1319.4	1520.1	1723.9	1930.8	2141.0	2354.2
600	197.2	395.0	595.9	800.0	1007.2	1217.6	1431.1	1647.7	1867.5	2090.4	2316.5	2545.7
650	213.2	426.9	643.8	863.8	1087.0	1313.3	1542.8	1775.4	2011.1	2250.0	2492.1	2737.2
700	229.1	458.8	691.7	927.7	1166.8	1409.1	1654.5	1903.1	2154.8	2409.6	2667.6	2928.7
750	245.1	490.7	739.6	991.5	1246.6	1504.8	1766.2	2030.8	2298.4	2569.2	2843.2	3120.3
800	261.0	522.7	787.4	1055.4	1326.4	1600.6	1877.9	2158.4	2442.0	2728.8	3018.7	3311.8
850	277.0	554.6	835.3	1119.2	1406.2	1696.4	1989.7	2286.1	2585.7	2888.4	3194.3	3503.3
900	292.9	586.5	883.2	1183.0	1486.0	1792.1	2101.4	2413.8	2729.3	3048.0	3369.8	3694.8
950	308.9	618.4	931.1	1246.9	1565.8	1887.9	2213.1	2541.4	2873.0	3207.6	3545.4	3886.3
1000	324.9	650.3	978.9	1310.7	1645.6	1983.6	2324.8	2669.1	3016.6	3367.2	3720.9	4077.8
1050	340.8	682.3	1026.8	1374.5	1725.4	2079.4	2436.5	2796.8	3160.2	3526.8	3896.5	4269.3
1100	356.8	714.2	1074.7	1438.4	1805.2	2175.1	2548.2	2924.5	3303.9	3686.4	4072.0	4460.8
1150	372.7	746.1	1122.6	1502.2	1885.0	2270.9	2660.0	3052.1	3447.5	3846.0	4247.6	4652.3
1200	388.7	778.0	1170.5	1566.0	1964.8	2366.7	2771.7	3179.8	3591.1	4005.6	4423.1	4843.9

NOTES:

- All measurements should be verified with a test piece.
- Note that for best fit on pipes smaller than 100 mm (4 in) NPS, use 10 mm V-groove.
- Contact Aspen Aerogels for additional sizes.

Pyrogel® XTE 5 mm (0.2 in) Blanket Cut Chart (inches)

NPS (in.)	Material Stretchout (inches)											
	<i>Includes 1 in overlap</i>											
	Number of Layers											
	1	2	3	4	5	6	7	8	9	10	11	12
0.5	4.9	10.0	16.3	23.9	32.7	42.8	54.1	66.6	80.4	95.4	111.7	129.1
0.75	5.5	11.3	18.3	26.6	36.0	46.8	58.7	71.9	86.3	102.0	118.9	137.1
1	6.4	13.0	20.8	29.9	40.2	51.8	64.6	78.6	93.8	110.3	128.1	147.0
1.25	7.5	15.1	24.1	34.2	45.6	58.3	72.1	87.2	103.6	121.2	140.0	160.1
1.5	8.2	16.6	26.3	37.2	49.4	62.8	77.4	93.3	110.4	128.7	148.3	169.1
2	9.7	19.6	30.8	43.2	56.9	71.7	87.9	105.2	123.8	143.6	164.7	187.0
2.5	11.3	22.8	35.5	49.5	64.7	81.2	98.9	117.8	137.9	159.3	182.0	205.9
3	13.2	26.7	41.4	57.4	74.5	92.9	112.6	133.5	155.6	179.0	203.6	229.4
3.5	14.8	29.8	46.1	63.6	82.4	102.4	123.6	146.1	169.8	194.7	220.9	248.3
4	16.4	33.0	50.8	69.9	90.2	111.8	134.6	158.6	183.9	210.4	238.1	267.1
4.5	17.9	36.1	55.5	76.2	98.1	121.2	145.6	171.2	198.0	226.1	255.4	286.0
5	19.7	39.7	60.9	83.3	106.9	131.8	158.0	185.3	213.9	243.8	274.9	307.2
6	23.0	46.3	70.9	96.6	123.6	151.9	181.3	212.0	244.0	277.2	311.6	347.2
8	29.3	58.9	89.7	121.8	155.0	189.6	225.3	262.3	300.5	340.0	380.7	422.6
10	36.0	72.3	109.7	148.5	188.4	229.6	272.0	315.7	360.6	406.7	454.1	502.7
12	42.3	84.8	128.6	173.6	219.8	267.3	316.0	366.0	417.2	469.6	523.2	578.1
14	46.2	92.7	140.4	189.3	239.5	290.9	343.5	397.4	452.5	508.8	566.4	625.3
16	52.5	105.2	159.2	214.4	270.9	328.6	387.5	447.7	509.0	571.7	635.6	700.7
18	58.8	117.8	178.1	239.6	302.3	366.3	431.5	497.9	565.6	634.5	704.7	776.1
20	65.1	130.4	196.9	264.7	333.7	404.0	475.5	548.2	622.1	697.3	773.8	851.5
22	71.4	142.9	215.8	289.8	365.1	441.7	519.4	598.4	678.7	760.2	842.9	926.9
24	77.6	155.5	234.6	315.0	396.5	479.4	563.4	648.7	735.2	823.0	912.0	1002.3
26	83.9	168.1	253.5	340.1	428.0	517.1	607.4	699.0	791.8	885.8	981.1	1077.7
28	90.2	180.6	272.3	365.2	459.4	554.8	651.4	749.2	848.3	948.7	1050.2	1153.0
30	96.5	193.2	291.2	390.4	490.8	592.5	695.4	799.5	904.9	1011.5	1119.4	1228.4
32	102.8	205.8	310.0	415.5	522.2	630.2	739.3	849.8	961.4	1074.3	1188.5	1303.8
34	109.1	218.3	328.9	440.6	553.6	667.9	783.3	900.0	1018.0	1137.2	1257.6	1379.2
36	115.3	230.9	347.7	465.8	585.0	705.6	827.3	950.3	1074.5	1200.0	1326.7	1454.6
38	121.6	243.5	366.6	490.9	616.5	743.3	871.3	1000.6	1131.1	1262.8	1395.8	1530.0
40	127.9	256.0	385.4	516.0	647.9	781.0	915.3	1050.8	1187.6	1325.7	1464.9	1605.4
42	134.2	268.6	404.3	541.2	679.3	818.7	959.3	1101.1	1244.2	1388.5	1534.0	1680.8
44	140.5	281.2	423.1	566.3	710.7	856.4	1003.2	1151.4	1300.7	1451.3	1603.2	1756.2
46	146.8	293.7	442.0	591.4	742.1	894.1	1047.2	1201.6	1357.3	1514.2	1672.3	1831.6
48	153.0	306.3	460.8	616.6	773.5	931.8	1091.2	1251.9	1413.8	1577.0	1741.4	1907.0

NOTES:

- All measurements should be verified with a test piece.
- Note that for best fit on pipes smaller than 100 mm (4 in) NPS, use 10 mm V-groove.
- Contact Aspen Aerogels for additional sizes.

Pyrogel® XTE 10 mm Blanket Cut Chart (cm)

NPS (mm)	Material Stretchout (cm)											
	Number of Layers											
	1	2	3	4	5	6	7	8	9	10	11	12
15	15.8	35.7	62.2	95.3	135.0	181.3	234.2	293.7	359.7	432.4	511.7	597.6
20	17.5	39.1	67.3	102.0	143.4	191.4	245.9	307.1	374.8	449.2	530.1	617.7
25	19.6	43.3	73.6	110.5	154.0	204.0	260.7	324.0	393.9	470.3	553.4	643.1
32	22.4	48.8	81.9	121.5	167.7	220.6	280.0	346.0	418.6	497.9	583.7	676.1
40	24.3	52.7	87.6	129.2	177.3	232.1	293.4	361.3	435.9	517.0	604.7	699.1
50	28.1	60.2	99.0	144.3	196.3	254.8	319.9	391.7	470.0	554.9	646.4	744.6
65	32.1	68.2	110.9	160.3	216.2	278.7	347.9	423.6	505.9	594.8	690.3	792.4
80	37.1	78.2	125.9	180.2	241.1	308.7	382.8	463.5	550.8	644.7	745.2	852.3
90	41.1	86.2	137.9	196.2	261.1	332.6	410.7	495.4	586.7	684.6	789.1	900.2
100	45.0	94.1	149.8	212.1	281.0	356.5	438.6	527.3	622.6	724.5	833.0	948.0
115	49.0	102.1	161.8	228.1	301.0	380.5	466.6	559.2	658.5	764.4	876.8	995.9
125	53.5	111.1	175.3	246.1	323.5	407.4	498.0	595.2	698.9	809.3	926.3	1049.8
150	62.0	128.1	200.7	280.0	365.8	458.3	557.3	663.0	775.2	894.0	1019.5	1151.5
200	78.0	160.0	248.6	343.8	445.6	554.0	669.0	790.6	918.8	1053.6	1195.0	1343.0
250	94.9	193.9	299.5	411.6	530.4	655.8	787.7	926.3	1071.5	1223.2	1381.6	1546.5
300	110.9	225.8	347.3	475.5	610.2	751.5	899.4	1054.0	1215.1	1382.8	1557.1	1738.0
350	120.9	245.8	377.3	515.4	660.1	811.4	969.3	1133.8	1304.9	1482.5	1666.8	1857.7
400	136.8	277.7	425.1	579.2	739.9	907.1	1081.0	1261.4	1448.5	1642.1	1842.4	2049.2
450	152.8	309.6	473.0	643.0	819.7	1002.9	1192.7	1389.1	1592.1	1801.7	2017.9	2240.7
500	168.7	341.5	520.9	706.9	899.5	1098.6	1304.4	1516.8	1735.8	1961.3	2193.5	2432.2
550	184.7	373.4	568.8	770.7	979.3	1194.4	1416.1	1644.5	1879.4	2120.9	2369.0	2623.8
600	200.6	405.4	616.7	834.6	1059.1	1290.2	1527.8	1772.1	2023.0	2280.5	2544.6	2815.3
650	216.6	437.3	664.5	898.4	1138.9	1385.9	1639.6	1899.8	2166.7	2440.1	2720.1	3006.8
700	232.6	469.2	712.4	962.2	1218.7	1481.7	1751.3	2027.5	2310.3	2599.7	2895.7	3198.3
750	248.5	501.1	760.3	1026.1	1298.4	1577.4	1863.0	2155.2	2453.9	2759.3	3071.2	3389.8
800	264.5	533.0	808.2	1089.9	1378.2	1673.2	1974.7	2282.8	2597.6	2918.9	3246.8	3581.3
850	280.4	564.9	856.0	1153.7	1458.0	1768.9	2086.4	2410.5	2741.2	3078.5	3422.4	3772.8
900	296.4	596.9	903.9	1217.6	1537.8	1864.7	2198.1	2538.2	2884.8	3238.1	3597.9	3964.3
950	312.4	628.8	951.8	1281.4	1617.6	1960.4	2309.9	2665.9	3028.5	3397.7	3773.5	4155.9
1000	328.3	660.7	999.7	1345.3	1697.4	2056.2	2421.6	2793.5	3172.1	3557.3	3949.0	4347.4
1050	344.3	692.6	1047.6	1409.1	1777.2	2152.0	2533.3	2921.2	3315.7	3716.8	4124.6	4538.9
1100	360.2	724.5	1095.4	1472.9	1857.0	2247.7	2645.0	3048.9	3459.4	3876.4	4300.1	4730.4
1150	376.2	756.5	1143.3	1536.8	1936.8	2343.5	2756.7	3176.6	3603.0	4036.0	4475.7	4921.9
1200	392.2	788.4	1191.2	1600.6	2016.6	2439.2	2868.4	3304.2	3746.6	4195.6	4651.2	5113.4

NOTES:

- All measurements should be verified with a test piece.
- Note that for best fit on pipes smaller than 100 mm (4 in) NPS, use 10 mm V-groove.
- Contact Aspen Aerogels for additional sizes.

Pyrogel® XTE 10 mm (0.4 in) Blanket Cut Chart (inches)

NPS (in.)	Material Stretchout (inches)											
	Number of Layers											
	1	2	3	4	5	6	7	8	9	10	11	12
0.5	6.2	14.1	24.5	37.5	53.2	71.4	92.2	115.6	141.6	170.2	201.5	235.3
0.75	6.9	15.4	26.5	40.2	56.5	75.3	96.8	120.9	147.6	176.8	208.7	243.2
1	7.7	17.1	29.0	43.5	60.6	80.3	102.6	127.6	155.1	185.2	217.9	253.2
1.25	8.8	19.2	32.2	47.8	66.0	86.8	110.2	136.2	164.8	196.0	229.8	266.2
1.5	9.6	20.7	34.5	50.8	69.8	91.4	115.5	142.3	171.6	203.5	238.1	275.2
2	11.1	23.7	39.0	56.8	77.3	100.3	126.0	154.2	185.0	218.5	254.5	293.1
2.5	12.6	26.9	43.7	63.1	85.1	109.7	137.0	166.8	199.2	234.2	271.8	312.0
3	14.6	30.8	49.6	71.0	94.9	121.5	150.7	182.5	216.8	253.8	293.4	335.5
3.5	16.2	33.9	54.3	77.2	102.8	130.9	161.7	195.0	231.0	269.5	310.7	354.4
4	17.7	37.1	59.0	83.5	110.6	140.4	172.7	207.6	245.1	285.2	327.9	373.2
4.5	19.3	40.2	63.7	89.8	118.5	149.8	183.7	220.2	259.3	300.9	345.2	392.1
5	21.1	43.7	69.0	96.9	127.3	160.4	196.1	234.3	275.2	318.6	364.7	413.3
6	24.4	50.4	79.0	110.2	144.0	180.4	219.4	261.0	305.2	352.0	401.4	453.4
8	30.7	63.0	97.9	135.4	175.4	218.1	263.4	311.3	361.7	414.8	470.5	528.8
10	37.4	76.3	117.9	162.1	208.8	258.2	310.1	364.7	421.8	481.6	543.9	608.9
12	43.7	88.9	136.8	187.2	240.2	295.9	354.1	414.9	478.4	544.4	613.0	684.3
14	47.6	96.8	148.5	202.9	259.9	319.4	381.6	446.4	513.7	583.7	656.2	731.4
16	53.9	109.3	167.4	228.0	291.3	357.1	425.6	496.6	570.3	646.5	725.3	806.8
18	60.1	121.9	186.2	253.2	322.7	394.8	469.6	546.9	626.8	709.3	794.5	882.2
20	66.4	134.5	205.1	278.3	354.1	432.5	513.5	597.2	683.4	772.2	863.6	957.6
22	72.7	147.0	223.9	303.4	385.5	470.2	557.5	647.4	739.9	835.0	932.7	1033.0
24	79.0	159.6	242.8	328.6	417.0	507.9	601.5	697.7	796.5	897.8	1001.8	1108.4
26	85.3	172.2	261.6	353.7	448.4	545.6	645.5	748.0	853.0	960.7	1070.9	1183.8
28	91.6	184.7	280.5	378.8	479.8	583.3	689.5	798.2	909.6	1023.5	1140.0	1259.2
30	97.8	197.3	299.3	404.0	511.2	621.0	733.5	848.5	966.1	1086.3	1209.2	1334.6
32	104.1	209.9	318.2	429.1	542.6	658.7	777.4	898.8	1022.7	1149.2	1278.3	1410.0
34	110.4	222.4	337.0	454.2	574.0	696.4	821.4	949.0	1079.2	1212.0	1347.4	1485.4
36	116.7	235.0	355.9	479.4	605.4	734.1	865.4	999.3	1135.8	1274.8	1416.5	1560.8
38	123.0	247.6	374.7	504.5	636.9	771.8	909.4	1049.5	1192.3	1337.7	1485.6	1636.2
40	129.3	260.1	393.6	529.6	668.3	809.5	953.4	1099.8	1248.9	1400.5	1554.7	1711.6
42	135.5	272.7	412.4	554.8	699.7	847.2	997.4	1150.1	1305.4	1463.3	1623.8	1787.0
44	141.8	285.3	431.3	579.9	731.1	884.9	1041.3	1200.3	1362.0	1526.2	1693.0	1862.4
46	148.1	297.8	450.1	605.0	762.5	922.6	1085.3	1250.6	1418.5	1589.0	1762.1	1937.8
48	154.4	310.4	469.0	630.2	793.9	960.3	1129.3	1300.9	1475.1	1651.8	1831.2	2013.2

NOTES:

- All measurements should be verified with a test piece.
- Note that for best fit on pipes smaller than 100 mm (4 in) NPS, use 10 mm V-groove.
- Contact Aspen Aerogels for additional sizes.

Pyrogel® Insulation Cladding Cut Chart (mm)

NPS (mm)	Pyrogel® Thickness (mm)															
	5 mm	10 mm	15 mm	20 mm	25 mm	30 mm	35 mm	40 mm	45 mm	50 mm	55 mm	60 mm	65 mm	70 mm	75 mm	80 mm
	Cladding Cut Length (mm)															
15	149.2	180.7	212.1	243.5	274.9	306.3	337.7	369.2	400.6	432.0	463.4	494.8	526.2	557.7	589.1	620.5
20	166.0	197.4	228.8	260.3	291.7	323.1	354.5	385.9	417.3	448.7	480.2	511.6	543.0	574.4	605.8	637.2
25	187.1	218.6	250.0	281.4	312.8	344.2	375.6	407.1	438.5	469.9	501.3	532.7	564.1	595.6	627.0	658.4
32	214.7	246.1	277.5	308.9	340.3	371.8	403.2	434.6	466.0	497.4	528.8	560.3	591.7	623.1	654.5	685.9
40	233.8	265.2	296.7	328.1	359.5	390.9	422.3	453.7	485.2	516.6	548.0	579.4	610.8	642.2	673.7	705.1
50	271.7	303.1	334.6	366.0	397.4	428.8	460.2	491.6	523.1	554.5	585.9	617.3	648.7	680.1	711.6	743.0
65	311.6	343.0	374.5	405.9	437.3	468.7	500.1	531.5	563.0	594.4	625.8	657.2	688.6	720.0	751.5	782.9
80	361.5	392.9	424.3	455.8	487.2	518.6	550.0	581.4	612.8	644.2	675.7	707.1	738.5	769.9	801.3	832.7
90	401.4	432.8	464.2	495.7	527.1	558.5	589.9	621.3	652.7	684.1	715.6	747.0	778.4	809.8	841.2	872.6
100	441.3	472.7	504.1	535.5	567.0	598.4	629.8	661.2	692.6	724.0	755.5	786.9	818.3	849.7	881.1	912.5
115	481.2	512.6	544.0	575.4	606.9	638.3	669.7	701.1	732.5	763.9	795.4	826.8	858.2	889.6	921.0	952.4
125	526.1	557.5	589.0	620.4	651.8	683.2	714.6	746.0	777.5	808.9	840.3	871.7	903.1	934.5	965.9	997.4
150	610.9	642.3	673.7	705.1	736.5	767.9	799.4	830.8	862.2	893.6	925.0	956.4	987.9	1019.3	1050.7	1082.1
200	770.5	801.9	833.3	864.7	896.1	927.5	959.0	990.4	1021.8	1053.2	1084.6	1116.0	1147.5	1178.9	1210.3	1241.7
250	940.0	971.4	1002.9	1034.3	1065.7	1097.1	1128.5	1159.9	1191.4	1222.8	1254.2	1285.6	1317.0	1348.4	1379.9	1411.3
300	1099.6	1131.0	1162.5	1193.9	1225.3	1256.7	1288.1	1319.5	1351.0	1382.4	1413.8	1445.2	1476.6	1508.0	1539.4	1570.9
350	1199.4	1230.8	1262.2	1293.6	1325.0	1356.4	1387.9	1419.3	1450.7	1482.1	1513.5	1544.9	1576.4	1607.8	1639.2	1670.6
400	1359.0	1390.4	1421.8	1453.2	1484.6	1516.0	1547.5	1578.9	1610.3	1641.7	1673.1	1704.5	1736.0	1767.4	1798.8	1830.2
450	1518.6	1550.0	1581.4	1612.8	1644.2	1675.6	1707.1	1738.5	1769.9	1801.3	1832.7	1864.1	1895.5	1927.0	1958.4	1989.8
500	1678.1	1709.6	1741.0	1772.4	1803.8	1835.2	1866.6	1898.1	1929.5	1960.9	1992.3	2023.7	2055.1	2086.6	2118.0	2149.4
550	1837.7	1869.2	1900.6	1932.0	1963.4	1994.8	2026.2	2057.7	2089.1	2120.5	2151.9	2183.3	2214.7	2246.1	2277.6	2309.0
600	1997.3	2028.8	2060.2	2091.6	2123.0	2154.4	2185.8	2217.2	2248.7	2280.1	2311.5	2342.9	2374.3	2405.7	2437.2	2468.6
650	2156.9	2188.3	2219.8	2251.2	2282.6	2314.0	2345.4	2376.8	2408.3	2439.7	2471.1	2502.5	2533.9	2565.3	2596.8	2628.2
700	2316.5	2347.9	2379.4	2410.8	2442.2	2473.6	2505.0	2536.4	2567.8	2599.3	2630.7	2662.1	2693.5	2724.9	2756.3	2787.8
750	2476.1	2507.5	2538.9	2570.4	2601.8	2633.2	2664.6	2696.0	2727.4	2758.9	2790.3	2821.7	2853.1	2884.5	2915.9	2947.4
800	2635.7	2667.1	2698.5	2730.0	2761.4	2792.8	2824.2	2855.6	2887.0	2918.5	2949.9	2981.3	3012.7	3044.1	3075.5	3106.9
850	2795.3	2826.7	2858.1	2889.5	2921.0	2952.4	2983.8	3015.2	3046.6	3078.0	3109.5	3140.9	3172.3	3203.7	3235.1	3266.5
900	2954.9	2986.3	3017.7	3049.1	3080.6	3112.0	3143.4	3174.8	3206.2	3237.6	3269.1	3300.5	3331.9	3363.3	3394.7	3426.1
950	3114.5	3145.9	3177.3	3208.7	3240.2	3271.6	3303.0	3334.4	3365.8	3397.2	3428.6	3460.1	3491.5	3522.9	3554.3	3585.7
1000	3274.1	3305.5	3336.9	3368.3	3399.7	3431.2	3462.6	3494.0	3525.4	3556.8	3588.2	3619.7	3651.1	3682.5	3713.9	3745.3
1050	3433.7	3465.1	3496.5	3527.9	3559.3	3590.8	3622.2	3653.6	3685.0	3716.4	3747.8	3779.2	3810.7	3842.1	3873.5	3904.9
1100	3593.3	3624.7	3656.1	3687.5	3718.9	3750.3	3781.8	3813.2	3844.6	3876.0	3907.4	3938.8	3970.3	4001.7	4033.1	4064.5
1150	3752.9	3784.3	3815.7	3847.1	3878.5	3909.9	3941.4	3972.8	4004.2	4035.6	4067.0	4098.4	4129.9	4161.3	4192.7	4224.1

NOTES:

- Shaded areas indicate a finished diameter less than 75 mm. Depending on equipment, rolling metal to a finished diameter less than 75 mm may be problematic. Contact Aspen Aerogels for recommended solutions.
- All cut lengths are based on a 50mm overlap and do not include for safety edge. Additional amounts required for larger overlap or safety edge should be added.
- Contact Aspen Aerogels for additional sizes.

Pyrogel® Insulation Cladding Cut Chart (inches)

NPS (in.)	Pyrogel® Thickness (inches)															
	0.2 in.	0.4 in.	0.6 in.	0.8 in.	1.0 in.	1.2 in.	1.4 in.	1.6 in.	1.8 in.	2.0 in.	2.2 in.	2.4 in.	2.6 in.	2.8 in.	3.0 in.	3.2 in.
	Cladding Cut Length (inches)															
0.5	5.9	7.1	8.3	9.6	10.8	12.1	13.3	14.5	15.8	17.0	18.2	19.5	20.7	22.0	23.2	24.4
0.75	6.5	7.8	9.0	10.2	11.5	12.7	14.0	15.2	16.4	17.7	18.9	20.1	21.4	22.6	23.9	25.1
1	7.4	8.6	9.8	11.1	12.3	13.6	14.8	16.0	17.3	18.5	19.7	21.0	22.2	23.4	24.7	25.9
1.25	8.5	9.7	10.9	12.2	13.4	14.6	15.9	17.1	18.3	19.6	20.8	22.1	23.3	24.5	25.8	27.0
1.5	9.2	10.4	11.7	12.9	14.2	15.4	16.6	17.9	19.1	20.3	21.6	22.8	24.0	25.3	26.5	27.8
2	10.7	11.9	13.2	14.4	15.6	16.9	18.1	19.4	20.6	21.8	23.1	24.3	25.5	26.8	28.0	29.3
2.5	12.3	13.5	14.7	16.0	17.2	18.5	19.7	20.9	22.2	23.4	24.6	25.9	27.1	28.3	29.6	30.8
3	14.2	15.5	16.7	17.9	19.2	20.4	21.7	22.9	24.1	25.4	26.6	27.8	29.1	30.3	31.5	32.8
3.5	15.8	17.0	18.3	19.5	20.8	22.0	23.2	24.5	25.7	26.9	28.2	29.4	30.6	31.9	33.1	34.4
4	17.4	18.6	19.8	21.1	22.3	23.6	24.8	26.0	27.3	28.5	29.7	31.0	32.2	33.5	34.7	35.9
4.5	18.9	20.2	21.4	22.7	23.9	25.1	26.4	27.6	28.8	30.1	31.3	32.6	33.8	35.0	36.3	37.5
5	20.7	22.0	23.2	24.4	25.7	26.9	28.1	29.4	30.6	31.8	33.1	34.3	35.6	36.8	38.0	39.3
6	24.0	25.3	26.5	27.8	29.0	30.2	31.5	32.7	33.9	35.2	36.4	37.7	38.9	40.1	41.4	42.6
8	30.3	31.6	32.8	34.0	35.3	36.5	37.8	39.0	40.2	41.5	42.7	43.9	45.2	46.4	47.6	48.9
10	37.0	38.2	39.5	40.7	42.0	43.2	44.4	45.7	46.9	48.1	49.4	50.6	51.9	53.1	54.3	55.6
12	43.3	44.5	45.8	47.0	48.2	49.5	50.7	52.0	53.2	54.4	55.7	56.9	58.1	59.4	60.6	61.8
14	47.2	48.5	49.7	50.9	52.2	53.4	54.6	55.9	57.1	58.4	59.6	60.8	62.1	63.3	64.5	65.8
16	53.5	54.7	56.0	57.2	58.4	59.7	60.9	62.2	63.4	64.6	65.9	67.1	68.3	69.6	70.8	72.1
18	59.8	61.0	62.3	63.5	64.7	66.0	67.2	68.4	69.7	70.9	72.2	73.4	74.6	75.9	77.1	78.3
20	66.1	67.3	68.5	69.8	71.0	72.3	73.5	74.7	76.0	77.2	78.4	79.7	80.9	82.1	83.4	84.6
22	72.4	73.6	74.8	76.1	77.3	78.5	79.8	81.0	82.2	83.5	84.7	86.0	87.2	88.4	89.7	90.9
24	78.6	79.9	81.1	82.3	83.6	84.8	86.1	87.3	88.5	89.8	91.0	92.2	93.5	94.7	96.0	97.2
26	84.9	86.2	87.4	88.6	89.9	91.1	92.3	93.6	94.8	96.0	97.3	98.5	99.8	101.0	102.2	103.5
28	91.2	92.4	93.7	94.9	96.1	97.4	98.6	99.9	101.1	102.3	103.6	104.8	106.0	107.3	108.5	109.8
30	97.5	98.7	100.0	101.2	102.4	103.7	104.9	106.1	107.4	108.6	109.9	111.1	112.3	113.6	114.8	116.0
32	103.8	105.0	106.2	107.5	108.7	110.0	111.2	112.4	113.7	114.9	116.1	117.4	118.6	119.8	121.1	122.3
34	110.1	111.3	112.5	113.8	115.0	116.2	117.5	118.7	119.9	121.2	122.4	123.7	124.9	126.1	127.4	128.6
36	116.3	117.6	118.8	120.0	121.3	122.5	123.8	125.0	126.2	127.5	128.7	129.9	131.2	132.4	133.7	134.9
38	122.6	123.9	125.1	126.3	127.6	128.8	130.0	131.3	132.5	133.7	135.0	136.2	137.5	138.7	139.9	141.2
40	128.9	130.1	131.4	132.6	133.8	135.1	136.3	137.6	138.8	140.0	141.3	142.5	143.7	145.0	146.2	147.5
42	135.2	136.4	137.7	138.9	140.1	141.4	142.6	143.8	145.1	146.3	147.6	148.8	150.0	151.3	152.5	153.7
44	141.5	142.7	143.9	145.2	146.4	147.7	148.9	150.1	151.4	152.6	153.8	155.1	156.3	157.5	158.8	160.0
46	147.8	149.0	150.2	151.5	152.7	153.9	155.2	156.4	157.6	158.9	160.1	161.4	162.6	163.8	165.1	166.3

NOTES:

- Shaded areas indicate a finished diameter less than 75 mm. Depending on equipment, rolling metal to a finished diameter less than 75 mm may be problematic. Contact Aspen Aerogels for recommended solutions.
- All cut lengths are based on a 50mm overlap and do not include for safety edge. Additional amounts required for larger overlap or safety edge should be added.
- Contact Aspen Aerogels for additional sizes.

Pyrogel® Miter Cut Chart (mm)

Pyrogel® Thickness															
NPS (mm)	10 mm			20 mm			30 mm			40 mm			50 mm		
	Heel (mm)	Gores	Throat (mm)	Heel (mm)	Gores	Throat (mm)	Heel (mm)	Gores	Throat (mm)	Heel (mm)	Gores	Throat (mm)	Heel (mm)	Gores	Throat (mm)
100	86.2	4	33.5	90.1	4	29.6	94.1	4	25.6	98.0	4	21.7	101.9	4	17.8
125	106.5	4	43.1	110.4	4	39.2	114.3	4	35.3	118.3	4	31.4	122.2	4	27.4
150	84.5	6	35.2	87.1	6	32.6	89.7	6	30.0	92.3	6	27.3	95.0	6	24.7
200	111.1	6	48.5	113.7	6	45.9	116.3	6	43.3	118.9	6	40.6	121.6	6	38.0
250	103.6	8	46.0	105.5	8	44.1	107.5	8	42.1	109.5	8	40.1	111.4	8	38.2
300	123.5	8	56.0	125.5	8	54.1	127.5	8	52.1	129.4	8	50.1	131.4	8	48.2
350	113.3	10	54.3	114.9	10	52.7	116.4	10	51.1	118.0	10	49.6	119.6	10	48.0
400	129.2	10	62.3	130.8	10	60.7	132.4	10	59.1	134.0	10	57.6	135.5	10	56.0
450	121.0	12	58.5	122.3	12	57.2	123.6	12	55.9	124.9	12	54.6	126.2	12	53.3
500	134.3	12	65.2	135.6	12	63.9	136.9	12	62.6	138.2	12	61.3	139.5	12	60.0
550	126.5	14	61.6	127.6	14	60.5	128.8	14	59.3	129.9	14	58.2	131.0	14	57.1
600	137.9	14	67.3	139.0	14	66.2	140.2	14	65.0	141.3	14	63.9	142.4	14	62.8
650	149.3	14	73.0	150.4	14	71.9	151.6	14	70.7	152.7	14	69.6	153.8	14	68.5
700	140.6	16	68.8	141.6	16	67.9	142.6	16	66.9	143.6	16	65.9	144.6	16	64.9
750	150.6	16	73.8	151.6	16	72.8	152.6	16	71.9	153.5	16	70.9	154.5	16	69.9
800	142.7	18	70.1	143.6	18	69.2	144.5	18	68.3	145.4	18	67.4	146.2	18	66.6
850	151.6	18	74.5	152.5	18	73.6	153.3	18	72.7	154.2	18	71.9	155.1	18	71.0
900	144.4	20	71.0	145.2	20	70.2	146.0	20	69.5	146.8	20	68.7	147.6	20	67.9
950	152.4	20	75.0	153.2	20	74.2	154.0	20	73.5	154.8	20	72.7	155.5	20	71.9
1000	160.4	20	79.0	161.2	20	78.2	161.9	20	77.4	162.7	20	76.7	163.5	20	75.9
1050	168.4	20	83.0	169.1	20	82.2	169.9	20	81.4	170.7	20	80.6	171.5	20	79.9
1100	176.3	20	87.0	177.1	20	86.2	177.9	20	85.4	178.7	20	84.6	179.5	20	83.8
1150	184.3	20	91.0	185.1	20	90.2	185.9	20	89.4	186.7	20	88.6	187.5	20	87.8
1200	192.3	20	95.0	193.1	20	94.2	193.9	20	93.4	194.7	20	92.6	195.4	20	91.8

NOTES:

- All measurements above should be verified with a test piece.
- Contact Aspen Aerogels for additional sizes.

Pyrogel® Miter Cut Chart (mm) cont.

NPS (mm)	Pyrogel® Thickness														
	60 mm			70 mm			80 mm			90 mm			100 mm		
	Heel (mm)	Gores	Throat (mm)	Heel (mm)	Gores	Throat (mm)	Heel (mm)	Gores	Throat (mm)	Heel (mm)	Gores	Throat (mm)	Heel (mm)	Gores	Throat (mm)
100	86.2	4	13.8	109.8	4	9.9	113.7	4	6.0	117.6	4	2.1	121.6	4	-1.9
125	126.1	4	23.5	130.0	4	19.6	134.0	4	15.6	137.9	4	11.7	141.8	4	7.8
150	97.6	6	22.1	100.2	6	19.5	102.8	6	16.9	105.4	6	14.3	108.1	6	11.6
200	124.2	6	35.4	126.8	6	32.8	129.4	6	30.2	132.0	6	27.6	134.7	6	24.9
250	113.4	8	36.2	115.4	8	34.3	117.3	8	32.3	119.3	8	30.3	121.3	8	28.4
300	133.3	8	46.2	135.3	8	44.2	137.3	8	42.3	139.2	8	40.3	141.2	8	38.3
350	121.1	10	46.4	122.7	10	44.9	124.3	10	43.3	125.9	10	41.7	127.4	10	40.1
400	137.1	10	54.4	138.7	10	52.8	140.2	10	51.3	141.8	10	49.7	143.4	10	48.1
450	127.5	12	52.0	128.9	12	50.7	130.2	12	49.4	131.5	12	48.1	132.8	12	46.8
500	140.8	12	58.6	142.2	12	57.3	143.5	12	56.0	144.8	12	54.7	146.1	12	53.4
550	132.1	14	56.0	133.2	14	54.8	134.4	14	53.7	135.5	14	52.6	136.6	14	51.5
600	143.5	14	61.7	144.6	14	60.5	145.8	14	59.4	146.9	14	58.3	148.0	14	57.2
650	154.9	14	67.4	156.0	14	66.2	157.2	14	65.1	158.3	14	64.0	159.4	14	62.9
700	145.5	16	63.9	146.5	16	62.9	147.5	16	62.0	148.5	16	61.0	149.5	16	60.0
750	155.5	16	68.9	156.5	16	67.9	157.5	16	67.0	158.5	16	66.0	159.4	16	65.0
800	147.1	18	65.7	148.0	18	64.8	148.8	18	63.9	149.7	18	63.1	150.6	18	62.2
850	156.0	18	70.1	156.8	18	69.3	157.7	18	68.4	158.6	18	67.5	159.5	18	66.6
900	148.3	20	67.1	149.1	20	66.3	149.9	20	65.5	150.7	20	64.7	151.5	20	64.0
950	156.3	20	71.1	157.1	20	70.3	157.9	20	69.5	158.7	20	68.7	159.5	20	68.0
1000	164.3	20	75.1	165.1	20	74.3	165.9	20	73.5	166.7	20	72.7	167.4	20	71.9
1050	172.3	20	79.1	173.1	20	78.3	173.9	20	77.5	174.6	20	76.7	175.4	20	75.9
1100	180.3	20	83.1	181.1	20	82.3	181.8	20	81.5	182.6	20	80.7	183.4	20	79.9
1150	188.2	20	87.1	189.0	20	86.3	189.8	20	85.5	190.6	20	84.7	191.4	20	83.9
1200	196.2	20	91.0	197.0	20	90.3	197.8	20	89.5	198.6	20	88.7	199.4	20	87.9

NOTES:

- All measurements above should be verified with a test piece.
- Contact Aspen Aerogels for additional sizes.

Pyrogel® Miter Cut Chart (inches)

Pyrogel® Thickness																
NPS (in.)	0.4 in. (10 mm)			0.8 in. (20 mm)			1.2 in. (30 mm)			1.6 in. (40 mm)			2.0 in. (50 mm)			
	Heel (in.)	Gores	Throat (in.)	Heel (in.)	Gores	Throat (in.)	Heel (in.)	Gores	Throat (in.)	Heel (in.)	Gores	Throat (in.)	Heel (in.)	Gores	Throat (in.)	
4	3.4	4	1.3	3.5	4	1.2	3.7	4	1.0	3.9	4	0.9	4.0	4	0.7	
5	4.2	4	1.7	4.3	4	1.5	4.5	4	1.4	4.7	4	1.2	4.8	4	1.1	
6	3.3	6	1.4	3.4	6	1.3	3.5	6	1.2	3.6	6	1.1	3.7	6	1.0	
8	4.4	6	1.9	4.5	6	1.8	4.6	6	1.7	4.7	6	1.6	4.8	6	1.5	
10	4.1	8	1.8	4.2	8	1.7	4.2	8	1.7	4.3	8	1.6	4.4	8	1.5	
12	4.9	8	2.2	4.9	8	2.1	5.0	8	2.1	5.1	8	2.0	5.2	8	1.9	
14	4.5	10	2.1	4.5	10	2.1	4.6	10	2.0	4.6	10	2.0	4.7	10	1.9	
16	5.1	10	2.5	5.2	10	2.4	5.2	10	2.3	5.3	10	2.3	5.3	10	2.2	
18	4.8	12	2.3	4.8	12	2.3	4.9	12	2.2	4.9	12	2.2	5.0	12	2.1	
20	5.3	12	2.6	5.3	12	2.5	5.4	12	2.5	5.4	12	2.4	5.5	12	2.4	
22	5.0	14	2.4	5.0	14	2.4	5.1	14	2.3	5.1	14	2.3	5.2	14	2.2	
24	5.4	14	2.6	5.5	14	2.6	5.5	14	2.6	5.6	14	2.5	5.6	14	2.5	
26	5.9	14	2.9	5.9	14	2.8	6.0	14	2.8	6.0	14	2.7	6.1	14	2.7	
28	5.5	16	2.7	5.6	16	2.7	5.6	16	2.6	5.7	16	2.6	5.7	16	2.6	
30	5.9	16	2.9	6.0	16	2.9	6.0	16	2.8	6.0	16	2.8	6.1	16	2.8	
32	5.6	18	2.8	5.7	18	2.7	5.7	18	2.7	5.7	18	2.7	5.8	18	2.6	
34	6.0	18	2.9	6.0	18	2.9	6.0	18	2.9	6.1	18	2.8	6.1	18	2.8	
36	5.7	20	2.8	5.7	20	2.8	5.7	20	2.7	5.8	20	2.7	5.8	20	2.7	
38	6.0	20	3.0	6.0	20	2.9	6.1	20	2.9	6.1	20	2.9	6.1	20	2.8	
40	6.3	20	3.1	6.3	20	3.1	6.4	20	3.0	6.4	20	3.0	6.4	20	3.0	
42	6.6	20	3.3	6.7	20	3.2	6.7	20	3.2	6.7	20	3.2	6.8	20	3.1	
44	6.9	20	3.4	7.0	20	3.4	7.0	20	3.4	7.0	20	3.3	7.1	20	3.3	
46	7.3	20	3.6	7.3	20	3.6	7.3	20	3.5	7.3	20	3.5	7.4	20	3.5	
48	7.6	20	3.7	7.6	20	3.7	7.6	20	3.7	7.7	20	3.6	7.7	20	3.6	

NOTES:

- All measurements above should be verified with a test piece.
- Contact Aspen Aerogels for additional sizes.

Pyrogel® Miter Cut Chart (inches) cont.

Pyrogel® Thickness															
NPS (in.)	2.4 in. (60 mm)			2.8 in. (70 mm)			3.2 in. (80 mm)			3.6 in. (90 mm)			4.0 in. (100 mm)		
	Heel (in.)	Gores	Throat (in.)	Heel (in.)	Gores	Throat (in.)	Heel (in.)	Gores	Throat (in.)	Heel (in.)	Gores	Throat (in.)	Heel (in.)	Gores	Throat (in.)
4	3.4	4	0.5	4.3	4	0.4	4.5	4	0.2	4.6	4	0.1	4.8	4	-0.1
5	5.0	4	0.9	5.1	4	0.8	5.3	4	0.6	5.4	4	0.5	5.6	4	0.3
6	3.8	6	0.9	3.9	6	0.8	4.0	6	0.7	4.2	6	0.6	4.3	6	0.5
8	4.9	6	1.4	5.0	6	1.3	5.1	6	1.2	5.2	6	1.1	5.3	6	1.0
10	4.5	8	1.4	4.5	8	1.3	4.6	8	1.3	4.7	8	1.2	4.8	8	1.1
12	5.2	8	1.8	5.3	8	1.7	5.4	8	1.7	5.5	8	1.6	5.6	8	1.5
14	4.8	10	1.8	4.8	10	1.8	4.9	10	1.7	5.0	10	1.6	5.0	10	1.6
16	5.4	10	2.1	5.5	10	2.1	5.5	10	2.0	5.6	10	2.0	5.6	10	1.9
18	5.0	12	2.0	5.1	12	2.0	5.1	12	1.9	5.2	12	1.9	5.2	12	1.8
20	5.5	12	2.3	5.6	12	2.3	5.6	12	2.2	5.7	12	2.2	5.8	12	2.1
22	5.2	14	2.2	5.2	14	2.2	5.3	14	2.1	5.3	14	2.1	5.4	14	2.0
24	5.7	14	2.4	5.7	14	2.4	5.7	14	2.3	5.8	14	2.3	5.8	14	2.3
26	6.1	14	2.7	6.1	14	2.6	6.2	14	2.6	6.2	14	2.5	6.3	14	2.5
28	5.7	16	2.5	5.8	16	2.5	5.8	16	2.4	5.8	16	2.4	5.9	16	2.4
30	6.1	16	2.7	6.2	16	2.7	6.2	16	2.6	6.2	16	2.6	6.3	16	2.6
32	5.8	18	2.6	5.8	18	2.6	5.9	18	2.5	5.9	18	2.5	5.9	18	2.4
34	6.1	18	2.8	6.2	18	2.7	6.2	18	2.7	6.2	18	2.7	6.3	18	2.6
36	5.8	20	2.6	5.9	20	2.6	5.9	20	2.6	5.9	20	2.5	6.0	20	2.5
38	6.2	20	2.8	6.2	20	2.8	6.2	20	2.7	6.2	20	2.7	6.3	20	2.7
40	6.5	20	3.0	6.5	20	2.9	6.5	20	2.9	6.6	20	2.9	6.6	20	2.8
42	6.8	20	3.1	6.8	20	3.1	6.8	20	3.1	6.9	20	3.0	6.9	20	3.0
44	7.1	20	3.3	7.1	20	3.2	7.2	20	3.2	7.2	20	3.2	7.2	20	3.1
46	7.4	20	3.4	7.4	20	3.4	7.5	20	3.4	7.5	20	3.3	7.5	20	3.3
48	7.7	20	3.6	7.8	20	3.6	7.8	20	3.5	7.8	20	3.5	7.8	20	3.5

NOTES:

- All measurements above should be verified with a test piece.
- Contact Aspen Aerogels for additional sizes.

For specialized training or recommendations regarding our application procedures, call 508-691-1111, visit info.aerogel.com/contact, or scan below with mobile device QR reader.

