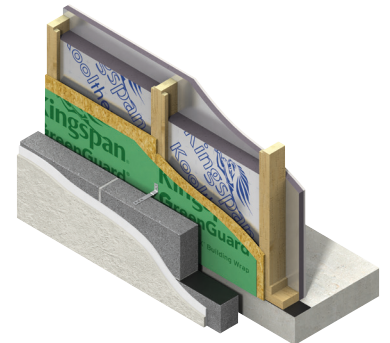
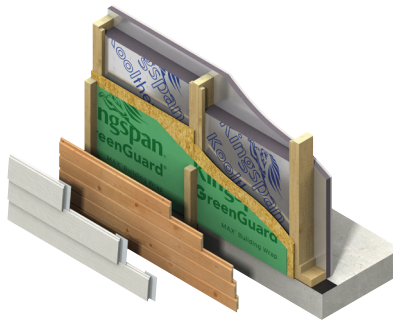
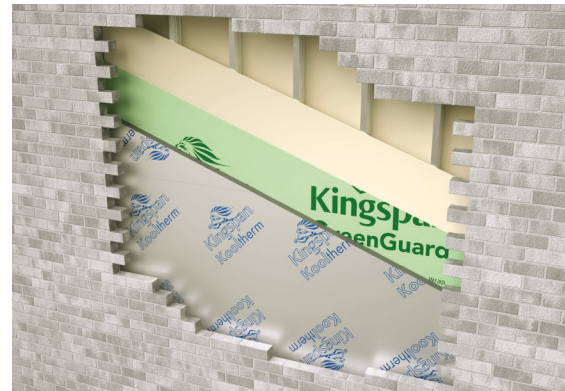
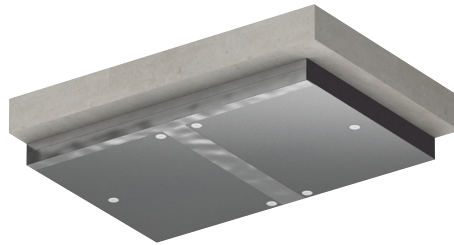
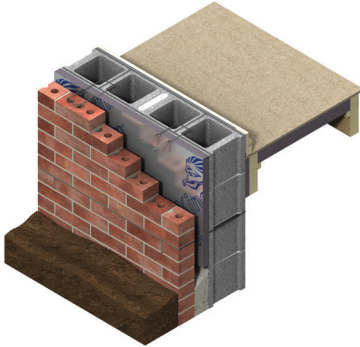
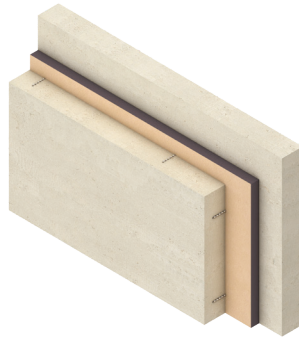
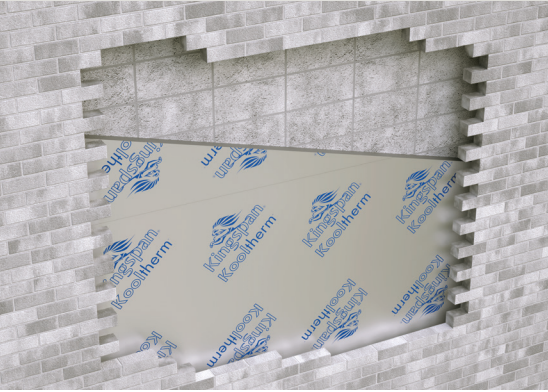




Kooltherm® Purchasing Guide

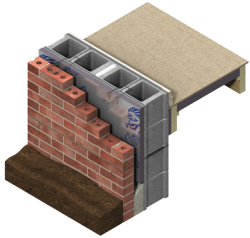
EFFECTIVE: JANUARY 1, 2018



Kooltherm®

Kingspan Kooltherm® offers an extensive range of premium performance insulation products for wall, floor, soffit (structural ceiling) and concrete sandwich wall system applications. It has a fiber-free rigid thermoset phenolic insulation core that resists both moisture and water vapor ingress, and has excellent fire performance characteristics.

- Highest R-value per inch among any commonly used insulation
- Excellent fire and smoke performance
- Lower total construction cost
- Higher ROI on building design



K8 Cavity Board

- Partial fill cavity wall insulation
- R-value of 16 on 2 in
- NFPA 285 compliant; for non-combustible cladding; ASTM E 84 rating of 25/20 (flame-smoke)
- Resists sagging and moisture penetration



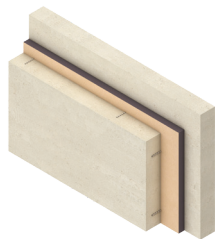
K10 FM Soffit Board

- Insulation for structural ceilings (soffits)
- R-value of 16 on 2 in
- FM approved for exposed use. Class 1 fire rating Class Number 4880
- Increased floor to ceiling clearances



K12 Framing Board

- Insulation for wood and steel framing systems
- R-value of 16 on 2 in
- NFPA 285 compliant; for non-combustible cladding; ASTM E 84 rating of 25/20 (flame-smoke)
- Low emissivity foil facings significantly increase thermal resistance of the cavity



K20 Concrete Sandwich Board

- High performance insulation for concrete sandwich wall systems
- R-value of 17 on 2 in
- ASTM E 84 rating of 5/5 (flame-smoke)
- Thinner pre-cast and tilt-up panels



Kooltherm Tape

- Reinforced for extra strength
- Effective vapor sealing
- Super strong pressure sensitive adhesion

K8° Cavity Board

Insulant Thickness (mm)	Insulant Thickness (inch)	R-Value	Board Size	Boards per Pack	Sq/Ft. per Pack
30	1.18	9.5	47.25" x 16"	16	84.39
40 •	1.57	12.5	47.25" x 16"	12	63.29
50 •	1.97	16	47.25" x 16"	10	52.74
60	2.46	19	47.25" x 16"	8	42.19
70	2.76	22	47.25" x 16"	6	31.65
75	2.95	24	47.25" x 16"	6	31.65
80	3.15	25.5	47.25" x 16"	6	31.65

K10° FM Soffit Board

Insulant Thickness (mm)	Insulant Thickness (inch)	R-Value	Board Size	Boards per Pack	Sq/Ft. per Pack
40 •	1.57	13	47.25" x 89.37"	8	234.57
60 •	2.36	19.5	47.25" x 89.37"	5	146.60

K12° Framing Board

Insulant Thickness (mm)	Insulant Thickness (inch)	R-Value	Board Size	Boards per Pack	Sq/Ft. per Pack
30 •	1.18	9.5	47.25" x 96"	10	314.95
40	1.57	12.5	47.25" x 96"	8	251.96
50 •	1.97	16	47.25" x 96"	6	188.97
60	2.46	19	47.25" x 96"	5	157.48
70	2.76	22	47.25" x 96"	4	125.98
75	2.95	24	47.25" x 96"	4	125.98
80	3.15	25.5	47.25" x 96"	4	125.98

K20° Concrete Sandwich Board

Insulant Thickness (mm)	Insulant Thickness (inch)	R-Value	Board Size	Boards per Pack	Sq/Ft. per Pack
40	1.57	13.5	47.25" x 89.37"	8	234.57
50 •	1.97	16.5	47.25" x 89.37"	6	175.93
60	2.46	20	47.25" x 89.37"	5	146.60
70	2.76	23.5	47.25" x 89.37"	4	117.28
75 •	2.95	25	47.25" x 89.37"	4	117.28
80	3.15	26.5	47.25" x 89.37"	4	117.28
90	3.54	30	47.25" x 89.37"	3	87.96
100 •	3.94	33.5	47.25" x 89.37"	3	58.64
120	4.72	40	47.25" x 89.37"	2	58.64

Kooltherm® Tape - Reinforced Polyethylene Foil Laminate Tape

Roll Size	Rolls per Case	Full Pallet Quantity (Rolls)
72 mm x 50 m •	16	576

Contact Details

USA

Sales and Technical Support

Tel 1 800 241 4402

Fax 1 678 589 7325

email info@kingspaninsulation.us

website www.kingspaninsulation.us

Kingspan Insulation LLC believes the information and recommendations herein to be accurate and reliable. However, since use conditions are not within its control, Kingspan Insulation LLC does not guarantee results from use of such products or other information herein and disclaims all liability from any resulting damage or loss. No warranty, express or implied, is given as to the merchantability, fitness for particular purpose, or otherwise with respect to the products referred to.

For more information on specific building product recommendations and product data, contact your Kingspan Insulation LLC representative.

For the most current installation guidelines and compliance information fo to www.kingspaninsulation.us.



Kingspan Insulation LLC

2100 RiverEdge Parkway, Suite 175, Atlanta, Georgia 30328

info@kingspaninsulation.us

1-800-241-4402

www.kingspaninsulation.us

® Kingspan and the Lion Device are Registered Trademarks of the Kingspan Group plc in the US, Canada and other countries. All rights reserved.

® Kooltherm is a Registered Trademark of the Kingspan Group plc in the US and other countries. All rights reserved.