

DELTA® protects property. Saves energy. Creates comfort.

TECHNICAL DATA SHEET

DELTA®-FASSADE S

Water-resistive Barrier for Façade Systems with Open Joint Claddings.

MATERIAL

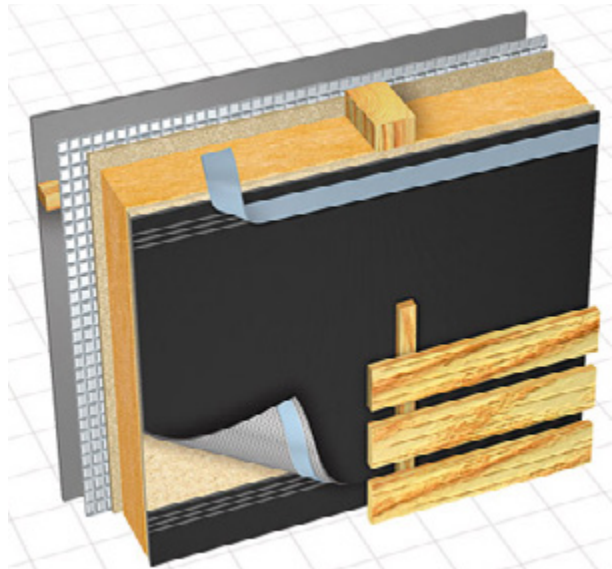
Highly tear-resistant polyester substrate with a special, highly UV-stabilized acrylic coating.

PROPERTIES

DELTA®-FASSADE S, highly stabilized against damage from UV exposure, is designed for use in cladding systems that have open joints of up to 2" (50 mm) wide which expose up to 40 % of the entire façade surface. It acts as a durable drainage plane, channeling bulk (liquid) water from wind-driven rain and snow to the outside of the structure. The watertight membrane helps protect the building enclosure from damaging effects of moisture infiltration. Its high vapor permeability allows moisture within the cavity to escape swiftly. DELTA®-FASSADE S is very light-weight and tear-resistant. This membrane withstands the rigors of jobsites, as well as tough wind and weather. Its performance is unaffected by surfactants.

APPLICATION

DELTA®-FASSADE S is installed outboard of the sheathing prior to the application of the final cladding system. DELTA® Accessories complete a UV resistant WRB system.



DELTA® products support sustainable and energy-efficient building practices, including efforts toward achieving LEED® certification (LEED® for New Construction & Major Renovations, LEED® for Core and Shell, LEED® for Existing Buildings and LEED® for Homes).

For technical support, call our technical support team at 1-888-4DELTA4 (1-888-433-5824) extension 326, or visit www.cosella-dorken.com.

ICC ESR-2932 DELTA® Water-resistive Barriers

Cosella-Dörken Products Inc. 4655 Delta Way Beamsville, Ontario L0R 1B4

1-888-4 DELTA 4, (905) 563-3255 Fax: (905) 563-5582

info@cosella-dorken.com, www.cosella-dorken.com

A company of the Dörken Group

Technical Data

Product name	DELTA®-FASSADE S	
Color	black	
Material	PET substrate with UV stable acrylic coating	
Water vapor transmission	1414.6 g/m ² /24 h	ASTM E96-05, Proc. A
	2247.4 g/m ² /24 h	ASTM E96-05, Proc. A
Vapor permeance	204 perms [grains/h/ft ² /in Hg]	ASTM E96-05, Proc. A
	328 perms [grains/h/ft ² /in Hg]	ASTM E96-05, Proc. B
Dry tensile strength	MD 47.4 lbs/in	ASTM D882-02
	CD 28.7 lbs/in	
Elongation at break	MD 40%	ASTM D882-02
	CD 45%	
Tear resistance	MD 1916 g	ASTM D1922-06a
	CD 2564 g	
Fastener pull-through force	211.3 N	ASTM D3462-03
Water penetration resistnace (Water Ponding Test)	Pass (> 10 min.) Meets requirements of AC38 for Grade D water-resistive barrier	ICC AC38, 4.2.2, June 2011 (CCMC MF07102, Section 6.4.5)
Water penetration resistance	103.8 cm	CAN/CGSB-4.2 #26.3-95
Water impact penetration resistance	no water passing	AATCC 42-2000
Bent test	Pass (no cracking)	ICC AC 38, 3.3.3
Pliability	Pass (no cracking)	CAN/CGSB-51.32-M77 § 5.2
Flame Spread	10	ASTM E84-09
	NFPA Class A; IBC Class A	
Smoke developed	145	ASTM E84-09
	NFPA Class A; IBC Class A	
Air permeance	0.9 l/(s x m ²) @ 75 Pa	ASTM E2178
Temperature range	-40 °F to +176 °F (-40 °C to +80 °C)	
Roll weight	approx. 44 lb (20 kg)	
Roll length	164 ft (50 m)	
Roll width	4' 11" ft (1.5 m)	
Maximum UV (sunlight) exposure	Always cover as soon as possible. Maximum exposure 30 weeks (prior to installation of cladding).	
Service life expectancy	> 25 years, if installed behind cladding systems that have open joints of up to 2" (50 mm) width which expose no more than 40% of entire façade surface	
DELTA® Accessories	DELTA®-FASSADE TAPE 2 1/2" x 65' 7" (10 / box) DELTA®-FASSADE FLASHING 4" x 65' 7" (6 / box) DELTA®-FASSADE FLASHING 9" X 65' 7" (2 / box)	Working temperature from 40 °F to 104 °F (+5 °C to 40 °C)