

DELTA® protects property. Saves energy. Creates comfort.

TECHNICAL DATA SHEET

DELTA®-DRY STUCCO & STONE Ventilated Rainscreen with Pre-installed Mortar Screen for Manufactured Stone and Conventional Stucco Claddings.

MATERIAL

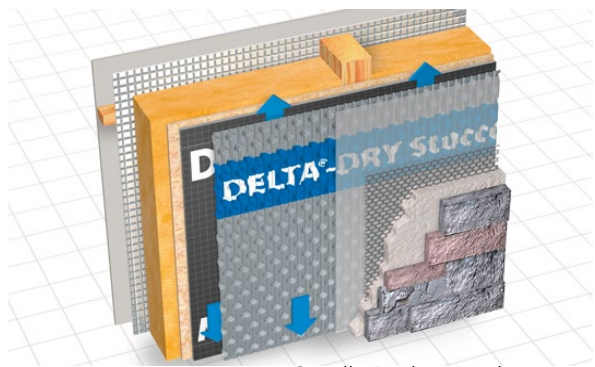
DELTA®-DRY STUCCO & STONE is a 3-dimensional rain-screen membrane made out of a special high-density polyethylene. It provides two-sided drainage and ventilation through its unique dimple and groove design. DELTA®-DRY STUCCO & STONE has a factory pre-installed polypropylene (PP) fabric mortar screen. It is ideal behind absorptive claddings such as manufactured stone veneer and conventional stucco claddings.

PROPERTIES

The structured membrane provides drainage and ventilation, as well as a complete capillary break behind the cladding. It protects the building enclosure from bulk water intrusion (i.e. wind-driven rain), and manages water leakage through the cladding. As well, DELTA®-DRY STUCCO & STONE captures and drains transient moisture migrating through the wall structure. DELTA®-DRY STUCCO & STONE provides an air-gap on the interior and exterior side of the membrane for drainage and ventilation. It allows water vapor, driven from the interior to the exterior of the structure, to escape through the ventilated air space between the sheathing board and the membrane. At the same time, DELTA®-DRY STUCCO & STONE minimizes the potential for condensation that could cause damage within the building enclosure. The membrane provides drying potential through ventilation behind any approved exterior cladding. DELTA®-DRY STUCCO & STONE impedes solar-driven moisture towards the interior of the structure as occurs with absorptive cladding materials like adhered manufactured stone veneer and conventional stucco claddings. The mortar screen prevents the scratch coat from filling the drainage grooves of DELTA®-DRY STUCCO & STONE, saving material and speeding the application process.

APPLICATION

DELTA®-DRY STUCCO & STONE is installed outboard of the water-resistive barrier over sheathing board. The material cuts easily with a utility knife. Seams are butted together with no overlapping necessary. Wire lath is installed directly over the mortar screen. Manufactured stone and conventional stucco is installed as per manufacturer's instructions over top of DELTA®-DRY STUCCO & STONE.



Technical Data

Product name	DELTA®-DRY STUCCO & STONE	
Color	Drainage core: silver-gray Geotextile: white	
Material	Drainage core: high-density polyethylene, stabilized (oxidation & UV) Geotextile: polypropylene	
Dimple height	approx. 2/5" (10.5 mm)	ASTM D1777-96
Compressive strength	93 kPa (1,946 psf) @ 8 % strain	ASTM D6364-06
Drainage efficiency	approx. 95%	ASTM 2273
Fungus resistance	Does not support fungus growth	ASTM C1338
Fire resistance	B2	DIN 4102
Flame spread	210	CAN/ULC-S102.2
Smoke developed	105-190	CAN/ULC-S102.2
Water penetration resistance	118 psi (813 kPa) Watertight	AATCC 127
Water vapor transmission	22 ng/(Pa s m²)	ASTM E96, Method A
Vapor Permeance	0.14 perms [grains/h/ft²/in Hg]	ASTM E96, Method A
Contact surface of rainscreen to WRB	less than 20% greater than 80% open	
Chemical properties	excellent chemical resistance, rot-proof	
Toxicity	non-toxic, non-polluting	
Temperature range	-22°F to +176°F (-30°C to +80°C)	
Weight per unit area	approx. 1.71 oz/ft² (525 g/m²)	ASTM D5261-92
Roll weight	approx. 18 lbs (8 kg)	
Roll length	46 ft (14 m)	
Roll width	3' 3" (1.0 m)	
Service life expectancy	> 20 years (at pH between 4 and 9). Do not expose to UV light for more than 30 days.	

DELTA® products support sustainable and energy-efficient building practices, including efforts toward achieving LEED® certification (LEED® for New Construction & Major Renovations, LEED® for Core and Shell, LEED® for Existing Buildings and LEED® for Homes).

For technical support, call our technical support team at 1-888-4DELTA4 (1-888-433-5824) extension 326, or visit www.cosella-dorcken.com.

Cosella-Dörken Products Inc., 4655 Delta Way, Beamsville, Ontario L0R 1B4

1-888-4 DELTA 4, (905) 563-3255 Fax: (905) 563-5582

info@cosella-dorcken.com, www.cosella-dorcken.com

A company of the Dörken Group