

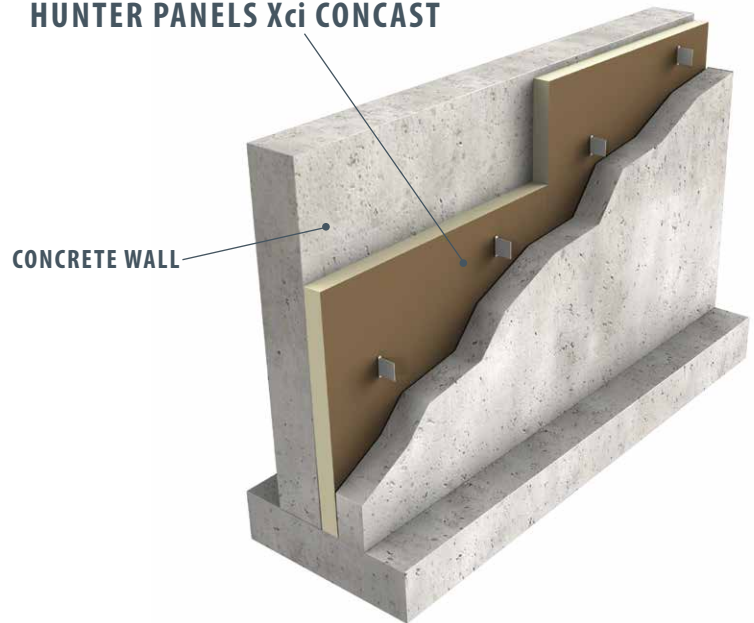


HUNTER
CONTINUOUS INSULATION

Hunter Panels Xci ConCast

Polyisocyanurate Insulation Manufactured On-Line to Tri-laminate Facers

HUNTER PANELS Xci CONCAST



DESCRIPTION

Hunter Panels Xci ConCast is a non-structural, energy-efficient rigid foam insulation composed of a polyisocyanurate foam core manufactured on-line to tri-laminate (poly/kraft/foil) facers on both sides. It is designed for use in concrete wall panels as the core insulation layer between two layers of concrete held together by connectors. This material would be suitable for precast, tilt-up or poured in place "sandwich" panels.

FEATURES AND BENEFITS

- Polyiso offers the highest R-value per inch of any foam plastic insulation, providing superior insulating capability
- Facing material has no exposed metal, eliminating risk of corrosion or negative chemical reaction with the concrete used in such application
- Designed for use in continuous insulation to assist in meeting the most current ASHRAE 90.1, IECC, IBC and IRC standards
- Manufactured with NexGen Chemistry: Zero Ozone Depleting Potential (ODP); Contains no CFC's or HCFC's; Virtually zero Global Warming Potential (GWP). Use of Xci products helps reduce the carbon footprint of buildings.
- Lightweight yet durable, easy to handle, cuts with a knife or saw

APPLICATIONS

- Provides continuous insulation (ci) in precast, tilt-up or poured in place concrete wall panel construction
- Xci ConCast is sandwiched between two layers of concrete with connectors holding together the finished panel

PANEL CHARACTERISTICS

- Available in two compressive strengths per ASTM C 1289 Type 1, Class 1 Grade 2 (20 psi) and Grade 3 (25 psi)
- Available 4' x 8' (1220mm x 2440mm) panels in thicknesses of 1" (25mm) – 3.5" (89mm)
- Other sizes are available upon special request— (for example: 12", 16", or 24" width)

CODES AND COMPLIANCES

- Complies with requirements of ASTM C1289
- International Building Code Chapter 26

Typical Physical Property Data Chart

Property	Test Method	Value
Compressive Strength	ASTM D 1621	20 psi* min. (138kPa, Grade 2)
Dimensional Stability	ASTM D 2126	2% linear change (7 days)
Moisture Vapor Permeance	ASTM E 96	<0.05 perm (2.875ng/(Pa•s•m ²))
Service Temperature		-100° to 250° F (-73°C to 122°C)

*Also available in Grade 3 (25 psi)

Hunter Panels Xci ConCast

Polyisocyanurate Insulation Manufactured On-Line to Tri-laminate Facers

WARNINGS AND LIMITATIONS

Consult local building codes or code authorities regarding code requirements and related acceptances. Insulation must be protected from open flame. Hunter Panels will not be responsible for specific building design by others, for deficiencies in construction or workmanship, for dangerous conditions on the job site, or for improper storage and handling. Technical specifications shown in this literature are intended to be used as general guidelines only and are subject to change without notice. Call Hunter Panels for more specific details.

INSTALLATION

- Xci ConCast boards are lightweight and easily cut with a knife or saw
- Boards are sandwiched as insulating component between two layers of concrete held together by connectors

JOB-SITE STORAGE

Good construction practice dictates that all insulations should be protected from moisture and direct sunlight during job-site storage. Pallets of Hunter Panels Xci ConCast are double packaged in a UV resistant polyethylene bag. This moisture resistant package is designed for protection from the elements during flat-bed shipment from our factories to the jobsite, and for storage on-site during phase construction. Outdoor storage for extended periods of time (i.e. in excess of 60 days) requires additional breathable waterproof tarpaulins and elevated storage above ground level by a minimum of 4".

LEED POTENTIAL CREDITS FOR POLYISO USE

Energy and Atmosphere

- Optimize Energy Performance
- Measurement & Verification

Materials & Resources

- Material Reuse
- Construction Waste Management
- Recycled Content
- Local and Regional Materials

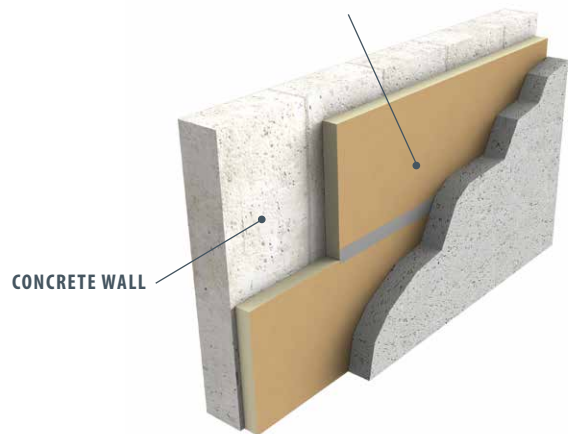
Innovation and Design

Xci ConCast Thermal Values

Thickness (inches)	Thickness (mm)	R Value*
1.0	25	6.5
1.5	38	10.0
2.0	51	13.3
2.5	64	17.0
3.0	76	20.3
3.5	89	24.0

*Thermal values as per ASTM C 518 in accordance with ASTM C 1289.

HUNTER PANELS Xci CONCAST



HUNTER
CONTINUOUS INSULATION

888.746.1114
www.hunterxci.com

