



**GENERAL**

INSULATION COMPANY, INC.

**Distributing the Best Brands Globally**

**Pushing Limits to be Your Distributor  
of Choice for Over Eighty-five Years.**







## Company Overview

General Insulation Company is a major distributor of commercial, industrial, and mechanical insulation; HVAC products; 3M fire stop products; weatherization products; acoustical barriers; and marine insulation; along with a full line of associated accessories such as spray foams, tapes, and fastening devices. GIC services many different types of contractors (mechanical, insulation, and sheet metal, for example), plants, OEMs, and a variety of supply houses. GIC has branch locations throughout the United States and Canada. At GIC, we have built our business on providing the highest quality products with superior service to our loyal customer base. GIC continually strives to set the benchmark for customer service in the wholesale distribution industry.

Please visit the rest of our website, store locations, and social media feeds for more information!

### Mission Statement

We will strive to be the distributor of choice to our present and future customers and the company our employees want to come to work for each day. We will challenge each other and learn from each other. We will listen, discuss, disagree, solve our problems, and move forward without politics or fear. We will embrace change for the growth opportunity it brings.

When in doubt, we will reach out to the resources within. We will be guided by our conscience and always do the "right thing," asking ourselves, "is this ethical, legal, and 'would I want this done to me?'"

We will stay focused, determined, committed, and we will avoid complacency at all costs

## Core Values Who We Are

Each circle best describes General Insulation and the individual people within the organization.



# Branch Locations

Branch #	Address	Phone	Fax	Toll Free #	General Manager
1 Boston	378 Commercial St., Malden, MA 02148	(781) 321-5300	(781) 321-5350	(800) 446-2144	Dave Lyons
2 Worcester	4 St. Mark St., Auburn, MA 01501	(508) 865-7400	(508) 865-2534	(800) 232-6158	Dave Lyons
3 Lewiston	70 Commercial St., Unit 3B, Lewiston, ME 04240	(207) 786-3456	(207) 786-0963	(800) 462-4748	Marc Bernier
5 Orlando	3482 Maggie Blvd, Orlando, FL 32811	(407) 843-9075	(407) 843-9079	(800) 442-3521	Alan McDonald
6 Dallas	4747 Leston St. Ste.808, Dallas, TX 75247	(214) 688-7000	(214) 688-7053	(800) 543-1442	Frank Foti
7 Harrisburg	2750 Paxton Street, Harrisburg, PA 17111	(717) 564-7091	(717) 564-7092	(877) 564-7091	Owen Sommers
8 Atlanta	6570 Interstate 85 Court, Norcross, GA 30093	(770) 662-5622	(770) 662-5407	(800) 858-8427	Ed Pella
9 Albany	15 Kairnes St., Albany, NY 12205	(518) 489-9891	(518) 453-0457	(888) 240-3100	Tony Roy
10 Tampa	4719 Distribution Dr., Tampa, FL 33605	(813) 241-2226	(813) 241-0082	(800) 250-3082	Nick Ring
11 Fort Myers	1850 Ortiz Ave, Suite 180, Fort Myers, FL 33905	(239) 332-2022	(239) 332-2722	(800) 350-3192	Mick Clinger
12 Houston	3485 W 12th Street, Houston, TX 77008	(713) 681-4700	(713) 681-9666	(877) 681-4700	Kathy Crawford
13 Carteret	7 Self Blvd, Carteret, NJ 07008	(732) 855-7740	(732) 855-1414	(877) 353-4900	Ray Blanchard
14 Rochester	460 Buffalo Rd, Bldg.300B, Roch, NY 14611	(585) 235-4850	(585) 235-4954	(888) 243-3336	Eugene Casterline
15 Syracuse	2320 Milton Ave., Syracuse, NY 13209	(315) 468-2260	(315) 468-2191	(800) 393-4413	Chris Pavlides
16 Buffalo	2750 Kenmore Ave., Tonawanda, N.Y.14150	(716) 873-3926	(716)873-0698	(866) 251-5155	Eugene Casterline
17 Erie	8115 Wattsburg Rd. Erie, PA 16509	(814) 453-3871	(814) 453-3697	(877) 520-3871	Bill Arcure
18 Hayward	2276 Commerce Pl., Hayward, CA 94545	(510) 670-2848	(510) 670-2850	(877) 654-7551	Len Raab
19 Camden	1102 Ferry Ave., Camden, NJ 08104	(856) 614-9000	(856) 614-9200	(877) 406-6407	Frank Quieti
20 Austin	598 Greenhill, Roundrock, TX 78664	(512) 341-8810	(512) 341-8922	(877) 452-3375	Nick Shore
21 Chicago	1250 Garnet Drive, Northlake, IL 60164	(708) 354-9800	(708) 354-9801	(866) 899-5300	Steve Pohl
22 Long Island	38-42 Review Ave. Long Island City, NY 11101	(718) 786-5003	(718) 786-3754	(866) 273-9225	Brian Fabrizio
23 Pittsburgh	4801 Grand Ave, Suite D, Neville Island, PA 15225	(412) 749-1770	(412) 749-1775	(800) 208-6051	Al Zaepfel
24 Miami	3304 Central Bus.Pk.Bldg14,Pompano,FL 33064	(954) 968-2120	(954) 968-2122	(866) 968-2120	Rey Torres
25 Dayton	5734 Webster St., Dayton, OH 45414	(937) 890-7900	(937) 890-6618	(800) 875-6387	Theresa Scott
26 Columbus	2536 Creekway Dr., Columbus, OH 43207	(614) 409-8800	(614) 497-8550	(800) 619-8214	Paul Miller
27 Indianapolis	1050 E. New York St, Indianapolis, IN 46202	(317) 423-0331	(317) 423-0443	(877) 423-0331	Angela Norris
31 Harlingen	2810 North Expressway 77, Suite E Harlingen TX 78552	(956) 412-9901	(956) 412-9902	(877) 412-9901	Raul Martinez
32 Cleveland	25971 Cannon Rd., Bedford Hts, OH 44147	(216) 881-2141	(216) 881-7542	(800) 362-5512	Dan Shawber
33 Seattle	1027 Andover Park, Tukwila, WA 98188	(425) 656-8500	(425) 656-8501	(888) 656-8550	Justin James
34 St Louis	1630 Macklind Ave. St.Louis, MO 63110	(314) 771-1200	(314) 771-1201	(866) 550-5565	Rosemary Wright
35 Bangor	257 Perry Road, Bangor, ME 04401	(207) 991-5240	(207) 991-5241	(877) 519-4822	Marc Bernier
36 Hyattsville	2270 Beaver Road, Hyattsville, MD 20785	(240) 582-8412	(240) 582-8413	(866) 905-6295	Bill Boone
37 Las Vegas	3585 Diablo Drive, Suite #2, Las Vegas, NV 89118	(702) 992-1402	(702) 992-1403	(866) 965-1443	Quinn Densley
38 Jacksonville	6950 Highway Avenue, Suite 104, Jacksonville, FL 32254	(904) 435-0531	(904) 435-0532	(877) 336-0531	Jessica Romero
39 Nashville	734 Freeland Station Rd, Suite 126 Nashville, TN 37228	(615) 242-8058	(615) 242-8059	(855) 242-8058	John Heck
40 Halifax	120 Troop Ave., Halifax, NS Canada B3B1Z1	(902) 468-5232	(902) 468-6915	(866) 494-1966	Craig Bowes
41 Toronto	191 Attwell Drive, Unit 1, Etobicoke, Ontario M9W5Z2	(416) 675-1710	(416) 675-1828	(866) 459-1323	Rob DeBoer
50 Fort Worth	501 East Devitt Street, Fort Worth, TX 76110	(817) 207-0957	(817) 207-9278	(855) 246-7548	Steve Shore
51 Alabama	2911 3rd Avenue North, Birmingham, AL 35203	(205) 203-0230	(205) 224-5614	(888) 623-6160	Michael Fritts
	Fabrication Shops				
29 Northeast Spec.	21 Glenn St., Lawrence, MA 01843	(978) 688-1162	(978) 686-7570	(800) 982-6613	Ray Renaud
30 Southeast Spec.	4719 Distribution Dr., Tampa, FL 33605	(813) 241-2226	(813) 241-0082	(800) 250-3082	Cory Narkawicz

# Building Insulation Products | Price Lists

Kraft Faced Batts													
R-Value	Dimensions			Pieces/ Pkg	Sq. Ft./ Pkg	Pkgs/ Unit	Units/ Stack	53' TL Load Factor	Pkgs/ 53' TL	Item Product Code	Reference Number	Product Availability	
	Thickness	Width	Length									East	West
R-11	3½"	15"	94"	16	156.67	5	6	0.12	780	5001293	B02EV	Standard	
	3½"	15"	106"	16	176.67	5	6	0.14	720	5002592	X02EV	Non-Standard	
	3½"	23"	94"	16	240.22	4	4	0.24	416	5005803	B04E	Non-Standard	
R-13	3½"	15"	94"	12	117.5	5	6	0.12	780	5004649	B06EVX	Standard	
	3½"	15"	106"	11	121.46	5	6	0.14	720	5002601	X06EV		
	3½"	15"	106"	12	132.5	5	6	0.14	720	5004652	X06EVX		
	3½"	23"	94"	11	165.15	4	4	0.24	416	5001443	B07E		
R-19	6¼"	11"	48"	28	102.67	4	4	0.24	416	5003393	B38E	Non-Standard	
	6¼"	15"	48"	20	100.00	4	6	0.16	624	5001499	B08E	Custom	
	6¼"	15"	94"	10	97.92	4	6	0.16	624	5001500	B09E	Standard	
	6¼"	15"	106"	10	110.42	4	6	0.17	576	5003766	X09E	Standard	
	6¼"	19"	48"	18	114.00	4	5	0.19	520	5006922	B55E	Standard	
	6¼"	23"	48"	18	138.00	4	4	0.24	416	5001469	B10E	Standard	
	6¼"	23"	94"	9	135.13	4	4	0.24	416	5001472	B11E	Standard	
R-22	6½"	15"	48"	16	80.00	4	6	0.16	624	5003938	B12E	Non-Standard	
	6½"	23"	48"	16	122.67	4	4	0.24	416	5003807	B13E	Non-Standard	
R-25	8"	15"	48"	16	80.00	4	6	0.16	624	5000862	B40E	Non-Standard	
	8"	23"	48"	16	122.67	4	4	0.24	416	5000870	B39E	Non-Standard	
R-30	10"	16"	48"	13	69.33	4	6	0.16	624	5001485	B16E	Standard	
	10"	19"	48"	11	69.67	4	5	0.19	520	5009062	X16E	Non-Standard	
	10"	24"	48"	11	88.00	4	4	0.24	416	5001489	B17E	Standard	
R-38	12"	16"	48"	11	58.67	4	6	0.16	624	5001490	B18E	Standard	
	12"	24"	48"	8	64.00	4	4	0.24	416	5001491	B19E		
R-49	13¾"	24"	48"	6	48.00	4	4	0.24	416	5004372	B15E	Non-Standard	
Kraft Faced Batts - High Density													
R-15	3½"	15"	93"	6	58.13	5	6	0.12	780	5001663	B45EV	Standard	
	3½"	23"	93"	6	89.13	4	4	0.24	416	5001403	B46E	Non-Standard	
R-21	5½"	15"	93"	7	67.81	5	6	0.12	780	5001671	B47EV	Standard	
	5½"	23"	93"	7	103.98	4	4	0.24	416	5003929	B48E	Non-Standard	
	5½"	16"	96"	7	74.66	4	6	0.16	624	5001297	E1297	Non-Standard	
	5½"	24"	96"	7	112.00	4	4	0.24	416	5004406	B25E	Non-Standard	
R-23	5½"	23"	93"	4	59.40	4	4	0.24	416	5004662	B05E	Non-Standard	
R-30	8¼"	15"	48"	11	55.00	4	6	0.16	624	5006564	B49E	Non-Standard	
	8¼"	23"	48"	11	84.33	4	4	0.24	416	5006567	B50E		
R-38	10¼"	15"	48"	8	40.00	5	6	0.12	780	5006286	B51EV	Non-Standard	
	10¼"	23"	48"	8	61.33	4	4	0.24	416	5006287	B52E		

\* Product to be phased out upon inventory depletion

STANDARD PRODUCTS –  
NON-STANDARD PRODUCT –

Listed in Bold. Minimum order per SKU is one stack.  
Listed in regular type. Generally available from stock, but may require a lead time of up to 21 days. Minimum order per SKU is one stack.

## Staple-Free Batts

R-Value	Dimensions			Pieces/ Pkg	Sq. Ft./ Pkg	Pkgs/ Unit	Units/ Stack	53' TL Load Factor	Pkgs/ 53' TL	Product Code	Item Reference Number	Product Availability	
	Thickness	Width	Length									East	West
R-13	• 3½"	15¼"	93"	11	108.34	4	6	0.16	624	5000572	SF13E	Standard	
		3½"	15¼"	12	118.1	5	6	0.12	780	5004654	SF13EVX	Standard	
	• 3½"	15¼"	105"	11	122.32	4	6	0.17	576	5000763	SF13XE	Standard	
		3½"	15¼"	105"	12	133.4	5	6	0.12	780	5004655	SF13XEVX	Standard
R-15	3½"	15¼"	93"	6	59.09	4	6	0.16	624	5000575	SF15E	Non-Standard	
	3½"	15¼"	106"	6	67.35	4	6	0.17	576	5000491	SF15XE	Non-Standard	Custom
R-19	6¼"	15¼"	93"	10	98.49	4	6	0.16	624	5004155	SF19E	Standard	
	6¼"	15¼"	106"	10	112.26	4	6	0.17	576	5009586	SF19XE	Non-Standard	
R-21	5½"	15¼"	93"	7	68.94	4	6	0.16	624	5000576	SF21E	Non-Standard	
	5½"	15¼"	105"	7	77.84	5	6	0.14	720	5009801	SFX21EV		

## Unfaced Batts

R-11	3½"	15¼"	94"	16	159.28	5	6	0.12	780	5001679	B61EV	Standard	
	3½"	15¼"	106"	16	179.61	5	6	0.14	720	5001412	X66EV	Non-Standard	
	3½"	23¾"	94"	16	242.83	4	4	0.24	416	5005818	B63E	Non-Standard	
R-13	3½"	15"	94"	12	117.50	5	6	0.12	780	5004651	B65EVX	Standard	
	3½"	15"	106"	12	132.50	5	6	0.14	720	5004653	X17EVX	Standard	
	3½"	23"	94"	11	165.15	4	4	0.24	416	5001575	B66E	Non-Standard	
R-19	6¼"	15"	48"	20	100.00	4	6	0.16	624	5001577	B67E	Standard	
	6¼"	15¼"	94"	10	99.55	4	6	0.16	624	5001581	B68E	Standard	
	6¼"	15¼"	106"	10	112.26	4	6	0.17	576	5003448	X20E	Non-Standard	
	6¼"	19"	48"	18	114.00	4	5	0.19	520	5005079	X67E	Non-Standard	
	6¼"	23¾"	94"	9	136.59	4	4	0.24	416	5001589	B70E	Standard	
R-22	6½"	23"	48"	16	122.67	4	4	0.24	416	5006297	B72E	Non-Standard	
R-25	8"	16"	48"	16	85.33	4	6	0.16	624	5000865	B60E	Non-Standard	
	8"	24"	48"	16	128.00	4	4	0.24	416	5000873	B62E	Non-Standard	
R-30 Attic	10"	16"	48"	13	69.33	4	6	0.16	624	5001631	B75E	Standard	
	10"	19¼"	48"	11	70.58	4	5	0.19	520	5005111	N76E	Non-Standard	
	10"	24"	48"	11	88.00	4	4	0.24	416	5001641	B76E	Standard	
R-30 Floor	9½"	16"	48"	11	58.67	4	6	0.16	624	5007456	B30E	Custom	Non-Standard
	9½"	19¼"	48"	10	64.17	4	5	0.19	520	5007559	B32E	Custom	Non-Standard
	9½"	24"	48"	10	80.00	4	4	0.24	416	5007560	B31E	Custom	Non-Standard
R-38	12"	16"	48"	11	58.67	4	6	0.16	624	5001644	B77E	Standard	
	12"	24"	48"	8	64.00	4	4	0.24	416	5001657	B78E		
R-49	13¾"	24"	48"	6	48.00	4	4	0.24	416	5004347	B14E	Non-Standard	

• Product to be phased out upon inventory depletion  
\* Floor Insulation

STANDARD PRODUCTS –  
NON-STANDARD PRODUCT –

Listed in Bold. Minimum order per SKU is one stack.  
Listed in regular type. Generally available from stock, but may require a lead time of up to 21 days. Minimum order per SKU is one stack.

### Unfaced Batts - High Density

R-Value	Dimensions			Pieces/ Pkg	Sq. Ft./ Pkg	Pkgs/ Unit	Units/ Stack	53' TL Load Factor	Pkgs/ 53' TL	Item Product Code	Reference Number	Product Availability	
	Thickness	Width	Length									East	West
R-15	3½"	15"	93"	6	58.13	5	6	0.12	780	5001374	B92EV	Standard	
	3½"	23"	93"	6	89.13	4	4	0.24	416	5002895	B93E	Non-Standard	
R-21	5½"	15"	93"	7	67.81	5	6	0.14	780	5001401	B94EV	Standard	
	5½"	15"	106"	7	77.29	5	6	0.14	720	5001433	X92EV	Non-Standard	
	5½"	16"	96"	7	74.66	4	6	0.16	624	5000393	B23E	Non-Standard	
	5½"	23"	93"	7	103.98	4	4	0.24	416	5003816	B95E	Standard	
	5½"	24"	96"	7	112.00	4	4	0.24	416	5004410	B27E	Non-Standard	
R-23	5½"	15"	93"	4	38.75	5	6	0.14	720	5003716	B73EV	Non-Standard	
R-30	8¼"	15"	48"	11	55.00	5	6	0.12	780	5001946	B96EV	Non-Standard	
	8¼"	23"	48"	11	84.33	4	4	0.24	416	5007256	B97E	Non-Standard	
R-38	10¼"	15"	48"	8	40.00	5	6	0.12	780	5001955	B98EV	Non-Standard	
	10¼"	23"	48"	8	61.33	4	4	0.24	416	5006276	B99E	Non-Standard	

### Metal Frame Construction: Unfaced Batts

R-Value	Dimensions			Pieces/ Pkg	Sq. Ft./ Pkg	Pkgs/ Unit	Units/ Stack	53' TL Load Factor	Pieces/ 53' TL	Product Code	Item Reference Number	Product Availability	
	Thickness	Width	Length									East	West
R-8*	2½"	16"	96"	22	234.67	5	6	0.12	780	5001673	B79EV	Non-Standard	
	2½"	24"	96"	22	352.00	4	4	0.24	416	5001760	B80E		
R-11	3½"	16"	96"	16	170.67	5	6	0.12	780	5001405	B81EV	Standard	
	3½"	24"	48"	32	256.00	4	4	0.24	416	5001761	B83E	Non-Standard	
	3½"	24"	96"	16	256.00	4	4	0.24	416	5005820	B82E	Standard	
R-13	3½"	16"	96"	11	117.33	5	6	0.12	780	5001678	X43EV	Standard	
	3½"	16"	96"	12	128	5	6	0.12	780	5004657	X43EVX		
	3½"	24"	96"	11	176.00	4	4	0.24	416	5006257	X44E		
R-19	6¼"	16"	48"	20	106.67	4	6	0.16	624	5007996	B84E	Non-Standard	
	6¼"	16"	96"	10	106.67	4	6	0.16	624	5001817	B90E	Standard	
	6¼"	24"	48"	16	128.00	4	4	0.24	416	5005851	B85E	Standard	
	6¼"	24"	96"	9	144.00	4	4	0.24	416	5001825	B91E	Standard	Custom
R-21	5½"	16"	96"	7	74.66	4	6	0.16	624	5000393	B23E	Non-Standard	
	5½"	24"	96"	7	112.00	4	4	0.24	416	5004410	B27E	Non-Standard	

### Metal Frame Construction: Kraft Faced Batts

R-11	3½"	16"	96"	16	170.67	5	6	0.12	780	5001616	B24EV	Standard	
	3½"	24"	48"	32	256.00	4	4	0.24	416	5001501	B26E	Non-Standard	
R-13	3½"	16"	96"	11	117.33	5	6	0.12	780	5001429	B43EV	Non-Standard	
	3½"	16"	96"	12	128	5	6	0.12	780	5004656	B43EVX		
	3½"	24"	96"	11	176.00	4	4	0.24	416	5001062	B44E		
R-19	6¼"	16"	96"	10	106.67	4	6	0.16	624	5001561	B53E	Standard	
	6¼"	24"	48"	16	128.00	4	4	0.24	416	5005840	B28E	Standard	
	6¼"	24"	96"	8	128.00	4	4	0.24	416	5006808	B54E	Non-Standard	
R-21	5½"	16"	96"	7	74.66	4	6	0.16	624	5001297	E1297	Non-Standard	
	5½"	24"	96"	7	112.00	4	4	0.24	416	5004406	B25E	Non-Standard	

\* Product to be phased out upon inventory depletion

STANDARD PRODUCTS –  
NON-STANDARD PRODUCT –

Listed in Bold. Minimum order per SKU is one stack.  
Listed in regular type. Generally available from stock, but may require a lead time of up to 21 days. Minimum order per SKU is one stack.

**Metal Frame Construction: FSK Foil Faced Batts (Flame Rated FSK Foil)**

R-Value	Dimensions			Pieces/ Pkg	Sq. Ft./ Pkg	Pkgs/ Unit	Units/ Stack	53' TL Load Factor	Pieces/ 53' TL	Product Code	Item Reference Number	Product Availability	
	Thickness	Width	Length									East	West
R-11	3½"	16"	96"	16	170.67	5	6	0.12	780	5001446	FS29EV	Non-Standard	
	3½"	24"	96"	16	256.00	4	4	0.24	416	5005812	FS30E		
R-13	3½"	16"	96"	10	106.67	5	6	0.12	780	5001593	FS37EV	Non-Standard	
	3½"	24"	96"	10	160.00	4	4	0.24	416	5005132	FS38E		
R-19	6¼"	16"	48"	20	106.67	4	6	0.16	624	5008620	FS39E	N/A	Non-Standard
	6¼"	16"	96"	10	106.67	4	6	0.16	624	5002646	FS31E	Non-Standard	
	6¼"	24"	48"	18	144.00	4	4	0.24	416	5001864	FS40E	Non-Standard	
R-19 Extended Flange	6¼"	23"	93"	10	148.54	4	4	0.24	416	5001727	FS43E*	N/A	Non-Standard
R-30	10"	24"	48"	11	88.00	4	4	0.24	416	5001866	FS42E	Non-Standard	
R-30 Extended Flange	10"	24"	48"	11	88.00	4	4	0.24	416	5001731	FS44E*	Non-Standard	

**Metal Frame Construction: Standard Foil Faced Batts (Not Rated for Flame Propagation)**

R-19	6¼"	16"	96"	10	106.67	4	6	0.16	624	5004857	FB05E	Non-Standard	
	6¼"	24"	96"	9	144.00	4	4	0.24	416	5004858	FB06E		
<b>R-30</b>	<b>10"</b>	<b>24"</b>	<b>48"</b>	<b>11</b>	<b>88.00</b>	<b>4</b>	<b>4</b>	<b>0.24</b>	<b>416</b>	<b>5004861</b>	<b>FB08E</b>	<b>Standard</b>	

**Manufactured Housing Insulation: Unfaced Rolls**

R-Value	Dimensions			Pieces/ Pkg	Sq. Ft./ Pkg	Pkgs/ Unit	53' TL Load Factor	Pkgs/ 53' TL	Product Code	Item Reference Number	Product Availability	
	Thickness	Width	Length								East	West
R-5**	1½"	15"	60'	6	450	4	0.45	224	5002437	MH60E	Non-Standard	
R-5*	1½"	94"	60'	1	470	4	0.35	284	5001545	MH86E		
<b>R-7**</b>	<b>2¼"</b>	<b>15"</b>	<b>60'</b>	<b>6</b>	<b>450</b>	<b>4</b>	<b>0.45</b>	<b>224</b>	<b>5002441</b>	<b>MH67E</b>	<b>Standard</b>	
R-7**	2¼"	90"	60'	2	900	4	0.89	112	5003320	3320E	Non-Standard	
R-7*	2¼"	90"	60'	1	450	4	0.45	224	5007277	MH88E	Non-Standard	
R-7**	2¼"	96"	60'	2	960	4	0.96	104	5003158	E3158	Non-Standard	
R-11	3½"	15"	70½"	3	264.38	4	0.42	240	5001979	MS21E	Non-Standard	
R-11	3½"	48"	70½"	1	282	4	0.45	224	5007604	MS25E	Non-Standard	
R-11	3½"	48"	100'	1	400	4	0.45	224	5002600	2600E	Non-Standard	
R-11	3½"	72"	70½"	1	423	4	0.69	144	5007610	MS27E	Non-Standard	
R-11	3½"	84"	70½"	1	493.5	4	0.89	112	5007613	MS28E	Non-Standard	
R-11	3½"	88"	70½"	1	517	4	0.89	112	5003045	3045E	Non-Standard	
<b>R-11</b>	<b>3½"</b>	<b>96"</b>	<b>70½"</b>	<b>1</b>	<b>564</b>	<b>4</b>	<b>0.89</b>	<b>112</b>	<b>5007619</b>	<b>MS30E</b>	<b>Standard</b>	
R-13	3½"	15"	40'	3	150	4	0.42	240	5001493	1493E	Non-Standard	
R-19	6¼"	15"	39½'	3	146.85	4	0.42	240	5005274	MS22E	Non-Standard	
R-19	6¼"	48"	41'	1	164	4	0.44	228	5007628	MS63E	Non-Standard	
R-19	6¼"	92½"	40'	1	308.33	4	0.94	104	5005530	MS68E	Custom	Non-Standard

\* Hinged Products  
\*\* Bisected Products

**STANDARD PRODUCTS –**  
NON-STANDARD PRODUCT –

**Listed in Bold.** Minimum order per SKU is one stack.  
Listed in regular type. Generally available from stock, but may require a lead time of up to 21 days. Minimum order per SKU is one stack.

### Manufactured Housing Insulation: Kraft Faced Rolls

R-Value	Dimensions			Pieces/ Pkg	Sq. Ft./ Pkg	Pkgs/ Unit	53' TL Load Factor	Pkgs/ 53' TL	Product Code	Item Reference Number	Product Availability	
	Thickness	Width	Length								East	West
R-11	3½"	15"	70½"	3	264.38	4	0.42	240	5002227	MS01E	Non-Standard	
R-13	3½"	15"	46'	3	172.5	4	0.42	240	5002256	MS05E	Non-Standard	
R-19	6¼"	15"	39½'	3	146.85	4	0.42	240	5002238	MS11E	Non-Standard	
R-19	6¼"	23"	39½'	2	150.11	4	0.45	224	5002239	MS12E	Custom	Non-Standard

### Jet Stream ULTRA Blowing Insulation

Description	Pieces/ Pkg	Pkgs/ Stack	Lbs/Pkg	53' TL Load Factor	Pkgs/ 53' TL	Product Code	Product Availability	
							East	West
Jet Stream ULTRA bag	1	42	32	0.09	1092	5003619	Standard	
Jet Stream ULTRA pack	42	1	1344	3.85	26	5003646		

### EcoFill<sup>®</sup> Wx Blowing Insulation

Description	Pieces/ Pkg	Pkgs/ Stack	Lbs/Pkg	53' TL Load Factor	Pkgs/ 53' TL	Product Code	Product Availability	
							East	West
EcoFill Wx bag	1	42	30	0.09	1092	5003384	Standard	
EcoFill Wx pack	42	1	1260	3.85	26	5003385		

### EXPERT Premium Blowing Insulation

Description	Pieces/ Pkg	Pkgs/ Stack	Lbs/Pkg	53' TL Load Factor	Pkgs/ 53' TL	Product Code	Product Availability	
							East	West
<b>EXPERT</b> ™ bag	1	42	32	0.09	1092	5004516	Standard	
<b>EXPERT</b> ™ pack	42	1	1344	3.85	26	5004517		

STANDARD PRODUCTS –  
NON-STANDARD PRODUCT –

Listed in Bold. Minimum order per SKU is one stack.  
Listed in regular type. Generally available from stock, but may require  
a lead time of up to 21 days. Minimum order per SKU is one stack.





Foamsulate is our spray polyurethane foam insulation product designed for use in residential, commercial and industrial applications.

## **FOAMSULATE™ 50**

Open Cell - \*R-Value (Aged): 3.7/Inch \*Density: 0.5 PCF \*STC Rating: 42 \*Open Cell Content: >97

**GENERAL PROPERTIES:** Premium Spray Products, Inc. Foamsulate™ 50 is a low viscosity, 0.5 LB density open cell insulating material. Foamsulate™ 50 is designed to provide significant control of air infiltration along with a high R-value per inch. When properly installed by a trained contractor Foamsulate™ 50 quickly expands to fill the cracks, crevices, gaps and voids that exist in every structure. In addition Foamsulate™ 50 will conform to the curves, irregular surfaces and spaces to form a superior thermal envelope around your entire structure.

**RECOMMENDED USES:** Foamsulate™ 50 is an insulation system designed for use in residential, commercial and industrial applications. Use in lieu of more traditional forms of insulating materials such as fiberglass, cellulose or other loose fill products. Typical areas where spray polyurethane foam is applied are: exterior walls, vented and un-vented attic assemblies, between floors, etc.

## **FOAMSULATE™ 210**

Closed Cell - \*R-Value (Aged): 6.7/Inch \*Density: 2.0 PCF \*Air Leakage Rate: \*Open Cell Content: >96

**GENERAL PROPERTIES:** Foamsulate™ 210 is a 2.0 LB density closed cell insulating material. Foamsulate™ 210 is designed for use where insulation systems require superior air barrier characteristics along with the ability to minimize moisture infiltration. Foamsulate™ 210 has a 6.8 per inch R-value rating while providing structural enhancement due to its rigid nature when cured. When properly installed by a trained contractor Foamsulate™ 210 quickly expands to fill the cracks, crevices, gaps and voids that exist in every structure. In addition Foamsulate™ 210 will conform to the curves, irregular surfaces and spaces to form a superior thermal envelope around your entire structure.

**RECOMMENDED USES:** Foamsulate™ 210 is an insulation system designed for use in residential, commercial and industrial applications. Use in lieu of more traditional forms of insulating materials such as fiberglass, cellulose or other loose fill products. Typical areas where spray polyurethane foam is applied are; exterior walls, vented and un-vented attic assemblies, between floors, etc. Additional uses of this closed cell product are foundations, crawlspaces, HVAC ducts, fluid tanks, cold storage units, etc.



## Spray Foam and Foam Applicators

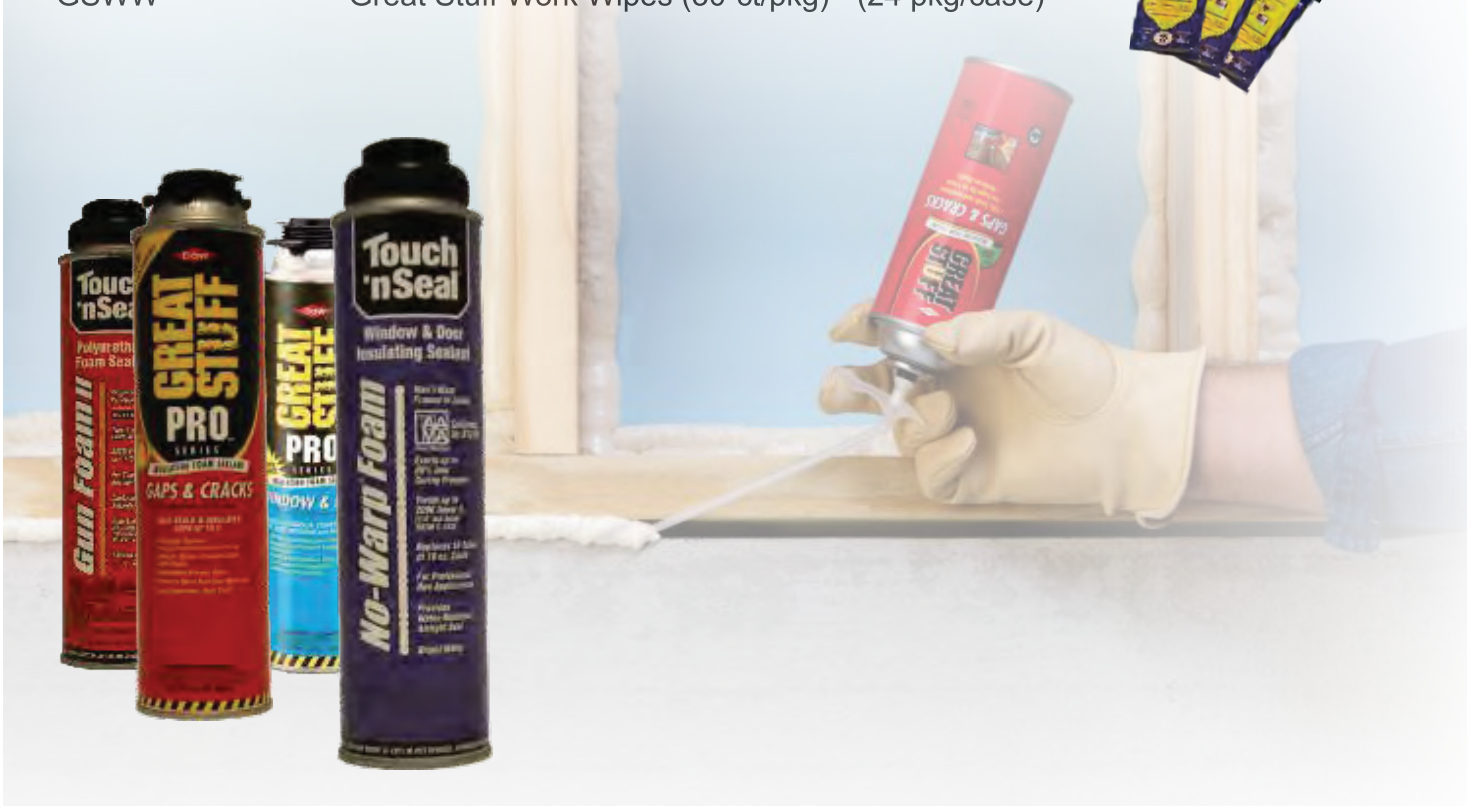
### Spray Foam Guns (One Component)

Item Number	Description
ENER13	Ener 13 Tool (Pro 13 Dispensing) - Dow
ENER14	Ener 14 Tool (Pro 14 Dispensing) - Dow
ENER15	Pro 15/Pageris Dispensing Gun - Dow
ENER14TIP	Ener 14 Foam Gun Replacement Tip - Dow
FGD	Sharpshooter D Foam Gun - Touch-n-Seal
FGX	Sharpshooter X Foam Gun - Touch-n-Seal
TNS4004510028	28" Long Barrel Foam Gun - Touch-n-Seal
TNS4004510639	46" Long Barrel Foam Gun - Touch-n-Seal
4004510629	Bottom Load Foam Gun - Touch-n-Seal



### Spray Foam (One Component)

Item Number	Description
GSF20	20 oz Great Stuff Pro (gun) Window / Door - Dow
GSF24	20 oz Great Stuff Pro (gun) Fire Block (Red) - Dow
TNS16	16 Lb (w/kit) Can Touch N Seal
TNS16T/O	16 Lb Can Touch N Seal Quick Tank Only
TNSHK	Hose Kit for 16 Lb Kits
TNS20NW	20 oz No Warp Gun Foam Window / Door - Touch-n-Seal
TNS24FB	24 oz Fire Block Gun Foam Fire Block (Red) - Touch-n-Seal
GSFGC	12 oz Great Stuff Pro Cleaner - Dow
TNSGC	12 oz Poly-Clean Gun Clean - Touch-n-Seal
GSWW	Great Stuff Work Wipes (30-ct/pkg) - (24 pkg/case)





## Spray Foam (Two Component)

### Item Number

### Description

#### Dow

GSF200	Two Component Foam 200 (Closed Cell)
GSF200FR	Two Component Foam 200 Fire Retardant (Closed Cell)
GSF620	Two Component Foam 620 w/kit (Closed Cell)
GSF620FR	Two Component Foam 620 w/kit Fire Retardant (Closed Cell)

#### Touch n Seal

TNS200	Two Component Foam 200bd ft (Closed Cell)
TNS200FR	Two Component Foam 200 Fire Retardant (Closed Cell)
TNS600	Two Component Foam 600bd ft (Closed Cell)
TNS600FR	Two Component Foam 600 Fire Retardant (Closed Cell)
TNS300	Two Component Foam 300bd ft (Open Cell)
TNS1000	Two Component Foam 1000bd ft (Open Cell)
TNS600NKP	Nozzle Kits Purple (2X) Conical Spray
TNS600NKY	Nozzle Kits Yellow (2X) Fan Spray
TNS600PTE	Plastic Tip Extensions
TNS600/15	600 Foam / 15' hose kit (P2 gun & 15' hose)
TNS600/30	600 Foam / 30' hose kit (P2 gun & 30' hose)



## Spray Foam Dispensing System & Foam (Two Component)

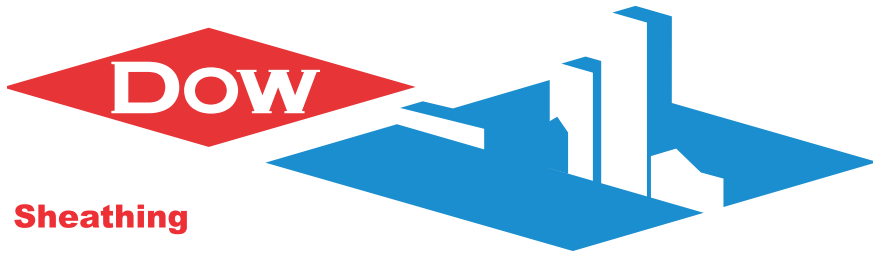
### Item Number

### Description

TNSCPDS1000	CPDS 1000 Constant Pressure Dispensing System
TNSCP750*	Two Component Foam 750bd ft (Closed Cell)
TNSCP1200*	Two Component Foam 1200bd ft (Open Cell)

\*Foam only works with CPDS 1000 System





## Sheathing

Dow 150 Board (Utility Fit)

Dow 250 Board

Super Tuff-R

Thermax

Other sheathing products such as light duty / heavy duty, Tuff-R available by special order



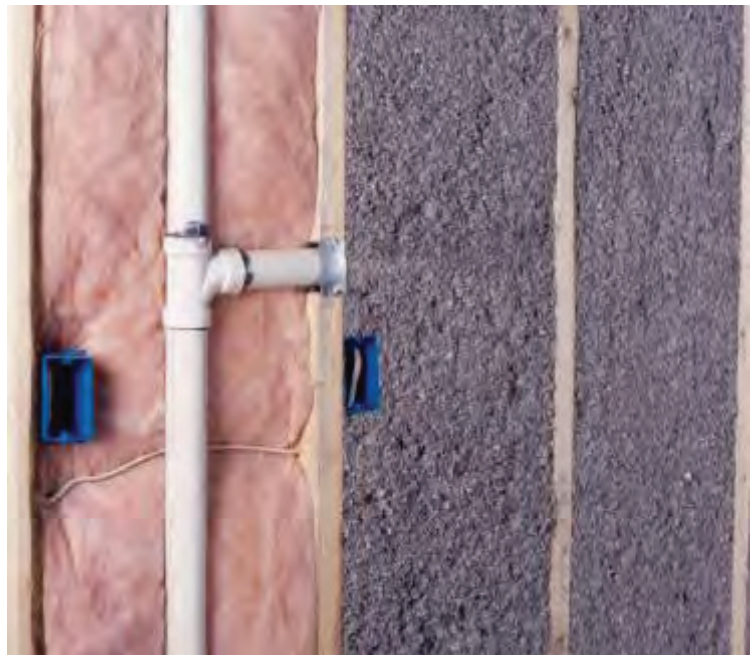


**Cellulose**  
Item Number

LFC  
LFCST

Description

Blue Bag (Unstabilized)  
Red Bag (Stabilized)



Applegate Insulation - Sustainable Savings

Applegate Insulation provides superb energy savings along with a significant reduction in air infiltration, resulting in outstanding long-term value and return on investment. Applegate Cellulose Insulation is also made of up to 85% American recycled materials, making Applegate one of the greenest insulations.

Applegate Cellulose Insulation meets and often exceeds tough fire standards providing increased safety and peace of mind. Many of the properties of Applegate Cellulose Insulation which result in fire resistance and a reduction in air infiltration also contribute to Applegates' superior performance in abating airborne sound.



R-Value @ 75 °F	Initial Installed Thickness (Inches)	Minimum Settled Thickness (Inches)	Maximum Net Coverage Area (Square Feet per Bag)	Number of Bags per 1,000 Square Feet	Minimum Weight per Square Foot (Pounds)
11	4.25	3.82	101.0	9.9	0.26
13	4.82	4.34	81.6	12.3	0.32
19	6.59	5.93	51.2	19.5	0.52
22	7.49	6.74	43.1	23.2	0.61
24	8.09	7.28	38.9	25.7	0.68
26	8.69	7.82	35.5	28.2	0.75
30	9.90	8.91	30.2	33.1	0.88
32	10.51	9.46	28.1	35.6	0.94
38	12.33	11.10	23.2	43.1	1.14
40	12.94	11.65	21.9	45.6	1.21
45	14.46	13.02	19.3	51.9	1.37
48	15.38	13.84	18.0	55.6	1.47
49	15.68	14.11	17.6	56.9	1.51
50	15.99	14.39	17.2	58.1	1.54
55	17.51	15.76	15.5	64.4	1.71
60	19.04	17.14	14.2	70.7	1.87

R-Value @ 75 °F	Initial Installed Thickness (Inches)	Minimum Settled Thickness (Inches)	Maximum Net Coverage Area (Square Feet per Bag)	Number of Bags per 1,000 Square Feet	Minimum Weight per Square Foot (Pounds)
11	3.14	3.12	82.9	12.1	0.32
13	3.71	3.68	70.1	14.3	0.38
19	5.42	5.38	48.0	20.8	0.55
22	6.27	6.23	41.4	24.1	0.64
24	6.95	6.75	37.3	26.8	0.71
26	7.53	7.31	34.4	29.1	0.77
30	8.69	8.44	29.8	33.5	0.89
32	9.27	9.00	28.0	35.8	0.95
38	11.18	10.59	22.9	43.7	1.16
40	11.76	11.14	21.8	46.0	1.22
45	13.23	12.54	19.3	51.7	1.37
48	14.12	13.37	18.1	55.2	1.46
49	14.41	13.65	17.8	56.3	1.49
50	14.71	13.93	17.4	57.5	1.52
55	16.18	15.32	15.8	63.2	1.67
60	17.65	16.71	14.5	69.0	1.83

## Baffles and Vents

Item Number	Description
1624B	Combination Baffle 16" and 24"
16N	Baffle (16" / 22") Specials
33N	Baffle (25-5/8" x 33")
44N	Baffle (25-5/8" x 44")
EVB48	Eave-Breeze Vent (20" x 48") 70 Bag
RULERS-ATTIC	Attic Rulers - 29" x 3" - 50-ct/Pack



## AccuVent

Item Number	Description
ACBP11754	AccuVent Soffit 14.5" x 41" (16" oc) 50 Bag
ACBP11739	AccuVent Soffit 22.5" x 41" (24" oc) 50 Bag
ACBP18426	Catherdral Clg. Starter Strip 14.5" x 48" (16 oc) 50 Bag
ACBP18425	Catherdral Clg. 15" x 48" (16" oc) 50 Bag
ACBP18446	Catherdral Clg. Starter Strip 22.5"x48" (24" oc) 50 Bag
ACBP18445	Catherdral Clg. 23" x 48" (24" oc) 50 Bag
ACBP18429	Extreme Soffit 14.5" x 50" (16" oc ) 50 Bag
ACBP18415	Extreme Soffit 22.5" x 50" (24" oc) 50 Bag
ACBP18600	AccuBlock 14.5" x 24.5" (16"o.c.) (50/ bundle)
ACBP18601	AccuBlock 22.5" x 24.5" (24"o.c.) (50/ bundle)



## Blowing Hose & Connectors

Item Number	Description
BH2	MKII 2" x 50' Blowing Hose Clear
BH3	MKII 3" x 50' Blowing Hose Clear
BH3.5	MKII 3.5" x 50' Blowing Hose Clear
BH4	MKII 4" x 50' Blowing Hose Clear
HC2	2" Hose Connector
HC3	3" Hose Connector
HC3.5	3.5" Hose Connector
HC4	4" Hose Connector
IVB	Insul-Vac, Versa-Vac Disposable Filter Bag (20-bags/case)



intec blowing machines



Call your sales representative for more information about the intec line of products



## Hammer Tackers/Hammer Tacker Parts/Staples

### Staples

Item Number	Description
STAT5006	T50 Arrow 1/4" Staples
STAT5038	T50 Arrow 3/8" Staples
STBSTCR261906	H30-6 Bostitch 1/4" Staples (Genuine)
STBSTCR261908	H30-6 Bostitch 5/16" Staples (Genuine)
STBSTCR501906	H30-8 Bostitch 1/4" Staples
STBSTCR501910	H30-8 Bostitch 3/8" Staples
STDF508	HT-550 Duo-Fast 1/4" Staples
STDF5010	HT-550 Duo-Fast 5/16" Staples
STRA1906	Rapid 19 1/4" Staples (Genuine)



### Hammer Tackers

Item Number	Description
THB6	H30-6 Bostitch Tacker Hammer
THB8	H30-8 Bostitch Tacker Hammer
THD	HT550 Duo Fast Tacker Hammer
THR19	Rapid 19 Tacker Hammer



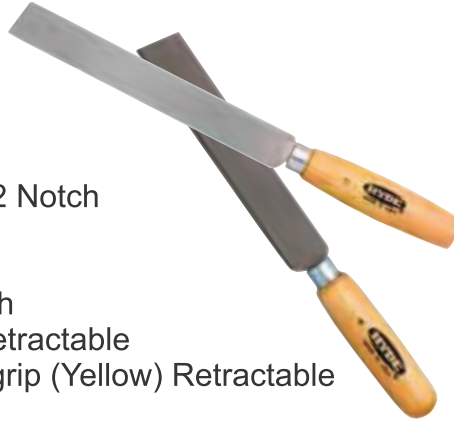
## Insulation Supports

Item Number	Description
ISP12	12" Insulation Supports
ISP16	16" Insulation Supports
ISP17	17" Insulation Supports
ISP20	20" Insulation Supports
ISP24	24" Insulation Supports
ISP26	26" Insulation Supports



## Knives and Blades

Item Number	Description
2NBLADE-A	Ardell 2" Knife Blade 2 Notch
6IK	6" Insulation Knife
8IK	8" Insulation Knife
SIK	Insulation Knife Sheath
UKA	Utility Knife (Ardell) Retractable
UKR	Utility Knife w/rubber grip (Yellow) Retractable



## Plugs

Item Number	Description
FP1.0	1" Foam Plug (1000 per)
FP2.0	2" Foam Plug (1000 per)
FP2.5	2 9/16" Foam Plug (750 per)
PP1.0	1" Plastic Plug (3/8" Shank) 500 per Bag
PP1.5	1-1/2" Plastic Plug (3/8" Shank) 250 per Bag
PP2.0	2" Regular Plastic Plug (250 per)
PP2.5	2 1/2" Regular Plastic Plug (250 per)
WP1.0	1" Pine Wood Plug (250 per)
WP2	2" Pine Wood Plug (250 per)
WP2.1/8	2 1/8" Pine Wood Plug (250 per)
WP2.5	2 1/2" Pine Wood Plug (175 per)
WP2.9/16	2 9/16" Pine Wood Plug (175 per)
CP0.625	5/8" Cork Plug (1000 per)





## Polyethylene Film

### Specialty Poly

Item Number	Description	UOM
POLY1M9	1 MIL Poly (9' x 400') Clear	ROLL
POLY2M84	2 MIL Poly (8.4' x 200') Clear	ROLL
POLYR6M12W	6 MIL Reinforced Poly (12' x 100') White	ROLL
POLYR6M20	6 MIL Reinforced Poly (20' x 100')	ROLL
POLY6M20W	6 MIL Poly (20' x 100') White	ROLL
POLYR6M8	6 MIL Reinforced Poly (8' x 100')	ROLL
POLY10M20B	10 MIL Poly (20' x 100') Black	ROLL

### 4 Mil Poly

Item Number	Description	UOM
POLY4M8	4 MIL Poly ( 8' x 100') Clear	ROLL
POLY4M8B	4 MIL Poly ( 8' x 100') Black	ROLL
POLY4M9	4 MIL Poly ( 9' x 100') Clear	ROLL
POLY4M10	4 MIL Poly (10' x 100') Clear	ROLL
POLY4M10B	4 MIL Poly (10' x 100') Black	ROLL
POLY4M12	4 MIL Poly (12' x 100') Clear	ROLL
POLY4M12B	4 MIL Poly (12' x 100') Black	ROLL
POLY4M14	4 MIL Poly (14' x 100') Clear	ROLL
POLY4M14B	4 MIL Poly (14' x 100') Black	ROLL
POLY4M16	4 MIL Poly (16' x 100') Clear	ROLL
POLY4M16B	4 MIL Poly (16' x 100') Black	ROLL
POLY4M20	4 MIL Poly (20' x 100') Clear	ROLL
POLY4M20B	4 MIL Poly (20' x 100') Black	ROLL
POLY4M24	4 MIL Poly (24' x 100') Clear	ROLL
POLY4M24B	4 MIL Poly (24' x 100') Black	ROLL

### 6 Mil Poly

Item Number	Description	UOM
POLY6M8	6 MIL Poly ( 8' x 100') Clear	ROLL
POLY6M8B	6 MIL Pol ( 8' x 100') Black	ROLL
POLY6M9	6 MIL Poly ( 9' x 100') Clear	ROLL
POLY6M10	6 MIL Poly (10' x 100') Clear	ROLL
POLY6M10B	6 MIL Poly (10' x 100') Black	ROLL
POLY6M12	6 MIL Poly (12' x 100') Clear	ROLL
POLY6M12B	6 MIL Poly (12' x 100') Black	ROLL
POLY6M14	6 MIL Poly (14' x 100') Clear	ROLL
POLY6M14B	6 MIL Poly (14' x 100') Black	ROLL
POLY6M16	6 MIL Poly (16' x 100') Clear	ROLL
POLY6M16B	6 MIL Poly (16' x 100') Black	ROLL
POLY6M20	6 MIL Poly (20' x 100') Clear	ROLL
POLY6M20B	6 MIL Poly (20' x 100') Black	ROLL
POLY6M24	6 MIL Poly (24' x 100') Clear	ROLL
POLY6M24B	6 MIL Poly (24' x 100') Black	ROLL





### Recessed Light Covers

Item Number	Description
FF130E	Recessed Light Cover 15x14x9" (Tenmat)

### Respirator/Suits/Gloves

Item Number	Description
08711122	Protective Lens Film for Gerson 9900
0899002X	Gerson 9900 Full Face Respirator
DM1501	Nuisance Dust Mask (50/Bx, 12 per Case)
DM1730	Dust Mask Dbl Strap (20/Bx, 12 per Case)
DM1740	N95 Particulate Resirator w/Vent (10/Bx, 10 per Case)
POSI-WAR	Posi Ware Grey Ty-Vek Suit XL (25 per Case)
POSI-WARXXL	Posi Ware Grey Ty-Vek Suit XXL (25 per Case)
POSI-WARHD	Posi Ware Grey Ty-Vek Suit XL w / Hood (25 per Case)
POSI-WARHDXXL	Posi Ware Grey Ty-Vek Suit XXL w / Hood (25 per Case)
SUITPOLYXL	Polypropylene Coverall w/Hood XL (25 per Case)
C3813	Posi Ware M3 Shoe Covers (200/Case)
9100	Reusable Cartridge Respirator - Small
9200	Reusable Cartridge Respirator - Med
9300	Reusable Cartridge Respirator - LG
G01	Organic Vapor Cartridge 087148
G70	P100 Particulate Filter 0871480
2900L	PosiShield Nitrile Gloves Large (100 Ea per Box)
2900XL	PosiShield Nitrile Gloves X-Large (100 Ea per Box)



To learn more about what General Insulation can do for you please visit us by scanning the link below or go to [www.generalinsulation.com](http://www.generalinsulation.com)



Don't forget to like us on Facebook and Follow us on Twitter



**GENERAL<sup>®</sup>**

**INSULATION COMPANY, INC.**

**Pushing Limits to be Your Distributor of Choice  
for Over Eighty-five Years.**