



GENERAL

INSULATION COMPANY, INC.

Distributing the Best Brands Globally

**Pushing Limits to be Your Distributor
of Choice for Over Eighty-five Years.**



***Weatherization and Foam Insulation
Product Catalog***

Contents

- Company Overview & Mission Statement 3
- Our Locations..... 4
- Spray Foam Insulation 5
- Thermal & Ignition Barrier 7
- Spray Foam Equipment..... 8
- Fiberglass Insulation 10
- Cellulose 11
- Krendl 12
- Mineral Wool..... 13
- Rigid Insulation..... 14
- Low-Pressure Spray Foam 15
- Constant Pressure Dispensing System 17
- Gun Foam Sealants..... 18
- Gun Foam Cleaners 18
- Low-Pressure Foam Guns 22
- Caulking, Sealants, & Adhesives..... 23
- Reflective Insulation 24
- Insulation Accessories 25
- Accessories 26
- Attic Venting..... 28
- Tapes 29
- Safety..... 30
- Ladders & Scaffolding 31
- Spray Foam Rigs..... 32



Company Overview

General Insulation Company is a major distributor of commercial, industrial, and mechanical insulation; HVAC products; 3M fire stop products; weatherization products; acoustical barriers; and marine insulation; along with a full line of associated accessories such as spray foams, tapes, and fastening devices. GIC services many different types of contractors (mechanical, insulation, and sheet metal, for example), plants, OEMs, and a variety of supply houses. GIC has branch locations throughout the United States and Canada. At GIC, we have built our business on providing the highest quality products with superior service to our loyal customer base. GIC continually strives to set the benchmark for customer service in the wholesale distribution industry.

Please visit the rest of our website, store locations, and social media feeds for more information!

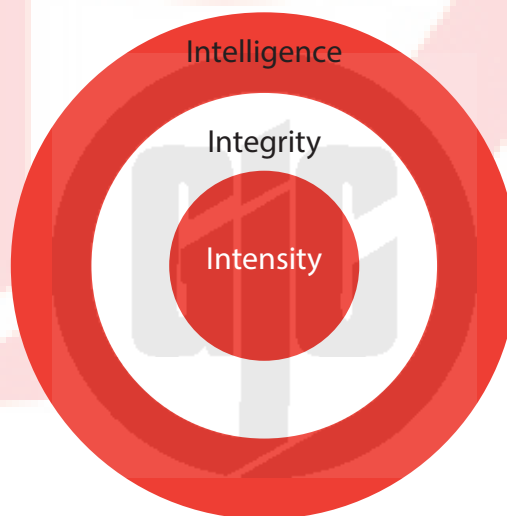
Mission Statement

We will strive to be the distributor of choice to our present and future customers and the company our employees want to come to work for each day. We will challenge each other and learn from each other. We will listen, discuss, disagree, solve our problems, and move forward without politics or fear. We will embrace change for the growth opportunity it brings.

When in doubt, we will reach out to the resources within. We will be guided by our conscience and always do the “right thing,” asking ourselves, “is this ethical, legal, and ‘would I want this done to me?’”

We will stay focused, determined, committed, and we will avoid complacency at all cost.

Each circle best describes General Insulation and the individual people



Our Locations

Branch #	Address	Phone	Fax	Toll Free #	General Manager	GM Email
Corporate	278 Mystic Ave., Medford, MA 02155	(781) 391-2070	(781) 391-3094	(800) 442-6662	Frank Granara	fgranara@generalinsulation.com
Corporate 2	1001 Hingham Street, Suite 302, Rockland, MA 02370	(781) 391-2070	(781) 878-3032	(800) 442-6662	Frank Granara	fgranara@generalinsulation.com
1 Boston	378 Commercial St., Malden, MA 02148	(781) 321-5300	(781) 321-5350	(800) 446-2144	Frank Granara	fr2granara@generalinsulation.com
2 Worcester	4 St. Mark St., Auburn, MA 01501	(508) 865-7400	(508) 865-2534	(800) 232-6158	Robert Breault	rbreault@generalinsulation.com
3 Lewiston	70 Commercial St., Unit 3B, Lewiston, ME 04240	(207) 786-3456	(207) 786-0963	(800) 462-4748	Marc Bernier	mbernier@generalinsulation.com
5 Orlando	3482 Maggie Blvd, Orlando, FL 32811	(407) 843-9075	(407) 843-9079	(800) 442-3521	Sean Belan	amcdonald@generalinsulation.com
6 Dallas	4747 Leston St. Ste.808, Dallas, TX 75247	(214) 688-7000	(214) 688-7053	(800) 543-1442	Frank Foti	ffoti@generalinsulation.com
7 Harrisburg	2750 Paxton Street, Harrisburg, PA 17111	(717) 564-7091	(717) 564-7092	(877) 564-7091	Frank Quieti	fquieti@generalinsulation.com
8 Atlanta	6570 Interstate 85 Court, Norcross, GA 30093	(770) 662-5622	(770) 662-5407	(800) 858-8427	Kevin Hathway	khathway@generalinsulation.com
9 Albany	15 Kairnes St., Albany, NY 12205	(518) 489-9891	(518) 453-0457	(888) 240-3100	Tony Roy	troy@generalinsulation.com
10 Tampa	4735 Distribution Dr., Tampa, FL 33605	(813) 241-2226	(813) 241-0082	(800) 250-3082	Amy Toledo	atoledo@generalinsulation.com
11 Fort Myers	1850 Ortiz Ave, Suite 180, Fort Myers, FL 33905	(239) 332-2022	(239) 332-2722	(800) 350-3192	Stephen Demico	sdemico@generalinsulation.com
12 Houston	10633 W. Little York, Building 3, Suite 350, Houston, TX 77041	(713) 681-4700	(713) 681-9666	(877) 681-4700	Kathy Crawford	kcrawford@generalinsulation.com
13 Carteret	7 Self Blvd, Carteret, NJ 07008	(732) 855-7740	(732) 855-1414	(877) 353-4900	Ray Blanchard	rblanchard@generalinsulation.com
14 Rochester	460 Buffalo Rd, Suite 160, Rochester, NY 14611	(585) 235-4850	(585) 235-4954	(888) 243-3336	Steve Duggan	sduggan@generalinsulation.com
15 Syracuse	2320 Milton Ave., Syracuse, NY 13209	(315) 468-2260	(315) 468-2191	(800) 393-4413	Tony Roy	troy@generalinsulation.com
16 Buffalo	2750 Kenmore Ave., Tonawanda, N.Y. 14150	(716) 873-3926	(716) 873-0698	(866) 251-5155	Eugene Casterline	ecasterline@generalinsulation.com
17 Erie	8115 Wattsburg Rd. Erie, PA 16509	(814) 453-3871	(814) 453-3697	(877) 520-3871	Bill Arcure	barcure@generalinsulation.com
18 Hayward	2276 Commerce Pl., Hayward, CA 94545	(510) 670-2848	(510) 670-2850	(877) 654-7551	Nick Ring	nring@generalinsulation.com
19 Camden	1102 Ferry Ave., Camden, NJ 08104	(856) 614-9000	(856) 614-9200	(877) 406-6407	Frank Quieti	fquieti@generalinsulation.com
20 Austin	598 Greenhill, Roundrock, TX 78664	(512) 341-8810	(512) 341-8922	(877) 452-3375	Nick Shore	nshore@generalinsulation.com
21 Chicago	1250 Garnet Drive, Northlake, IL 60164	(708) 354-9800	(708) 354-9801	(866) 899-5300	Pete Corriveau	pcorriveau@generalinsulation.com
22 Long Island	38-42 Review Ave. Long Island City, NY 11101	(718) 786-5003	(718) 786-3754	(866) 273-9225	Brian Fabrizio	bfabrizio@generalinsulation.com
23 Pittsburgh	4801 Grand Ave, Suite D, Neville Island, PA 15225	(412) 749-1770	(412) 749-1775	(800) 208-6051	Sean Stayduhar	sstayduhar@generalinsulation.com
24 Miami	3304 Park Central Blvd North, Pompano Beach, FL 33064	(954) 968-2120	(954) 968-2122	(866) 968-2120	Silvio Grasso	sgrasso@generalinsulation.com
25 Dayton	5734 Webster St., Dayton, OH 45414	(937) 890-7900	(937) 890-6618	(800) 875-6387	Theresa Scott	tscott@generalinsulation.com
26 Columbus	2536 Creekway Dr., Columbus, OH 43207	(614) 409-8800	(614) 497-8550	(800) 619-8214	Paul Miller	pmiller@generalinsulation.com
27 Indianapolis	1050 E. New York St, Indianapolis, IN 46202	(317) 423-0331	(317) 423-0443	(877) 423-0331	Angela Norris	anorris@generalinsulation.com
31 Harlingen	2810 North Expressway 77, Suite E Harlingen TX 78552	(956) 412-9901	(956) 412-9902	(877) 412-9901	Raul Martinez	rmartinez@generalinsulation.com
32 Cleveland	25971 Cannon Rd., Bedford Hts, OH 44146	(216) 881-2141	(216) 881-7542	(800) 362-5512	Dan Shawber	dshawber@generalinsulation.com
33 Seattle	1027 Andover Park, Tukwila, WA 98188	(425) 656-8500	(425) 656-8501	(888) 656-8550	Justin James	jjames@generalinsulation.com
34 St Louis	1630 Macklind Ave. St.Louis, MO 63110	(314) 771-1200	(314) 771-1201	(866) 550-5565	Steve Pohl	rmcmullen@generalinsulation.com
35 Bangor	257 Perry Road, Bangor, ME 04401	(207) 991-5240	(207) 991-5241	(877) 519-4822	Marc Bernier	mbernier@generalinsulation.com
36 Hyattsville	2270 Beaver Road, Hyattsville, MD 20785	(240) 582-8412	(240) 582-8413	(866) 905-6295	Bill Boone	bboone@generalinsulation.com
37 Las Vegas	3585 Diablo Drive, Suite #2, Las Vegas, NV 89118	(702) 992-1402	(702) 992-1403	(866) 965-1443	Quinn Densley	qdensley@generalinsulation.com
38 Jacksonville	6950 Highway Avenue, Suite 104, Jacksonville, FL 32254	(904) 435-0531	(904) 435-0532	(877) 336-0531	Silvio Grasso	jrromero@generalinsulation.com
39 Nashville	734 Freeland Station Rd, Suite 126 Nashville, TN 37228	(615) 242-8058	(615) 242-8059	(855) 242-8058	John Marihugh	jmarihugh@generalinsulation.com
40 Halifax	120 Troop Ave., Halifax, NS Canada B3B1Z1	(902) 468-5232	(902) 468-6915	(866) 494-1966	Craig Bowes	cbowes@generalinsulation.com
41 Toronto	191 Attwell Drive, Unit 1, Etobicoke, Ontario M9W5Z2	(416) 675-1710	(416) 675-1828	(866) 459-1323	Rob DeBoer	rdeboer@generalinsulation.com
42 Montreal	4220 Griffith Street, St. Laurent, Quebec H4T4L6	(514) 667-9444	(514) 344-9111	(844) 862-3065	John Nesbitt	jnesbitt@generalinsulation.com
50 Fort Worth	5116 Northeast Parkway, Suite 100, Fort Worth, TX 76106	(817) 207-0957	(817) 207-9278	(855) 246-7548	Chad McBride	cmcbride@generalinsulation.com
51 Birmingham	2911 3rd Avenue North, Birmingham, AL 35203	(205) 203-0230	(205) 224-5614	(888) 623-6160	Matthew Gilmore	mgilmore@generalinsulation.com
52 Milford	155 Hill St., Milford, CT 06460	(203) 951-3095	(203) 306-0242	(866) 289-0379	Paul Lenzie	plenzie@generalinsulation.com
53 San Antonio	4926 Space Center Drive, San Antonio, TX 78218-5326	(210) 551-0600	(210) 310-7900	(888) 380-7366	Rex Brinkmeyer	rbrinkmeyer@generalinsulation.com
54 Los Angeles	14971 E. Salt Lake Avenue, City of Industry, CA 91746-3115	(909) 378-6500	(626) 956-0816	(800) 427-1738	Dustin Hackney	dhackney@generalinsulation.com
55 Charlotte	2330 Tipton Drive Suite 700, Charlotte, NC 28206	(704) 837-7705	(980) 219-7176	(866) 540-2355	Tom Fink	tfink@generalinsulation.com
56 Portsmouth	500 Lincoln St., Portsmouth, VA 23704	(757) 785-4014	(757) 337-4257	(800) 425-8924	Patti Taylor	PTaylor@generalinsulation.com
57 Phoenix	3330 W. Papago, Suite A, Phoenix, AZ 85009	(602) 944-2249	(602) 626-7110	(844) 866-1680	Jaime Snedeker	jsnedeker@generalinsulation.com
58 Denver	16303 E 32nd Ave., Unit 10, Aurora, CO 80011	(303) 416-5390	(303) 648-6032	(866) 440-1030	Justin Hargis	jhargis@generalinsulation.com
60 Greensboro	12957 Trinity Road, Trinity, NC 27370	(336) 914-1200	(336) 861-0149	(844) 283-3512	Tara Hoover	thoover@generalinsulation.com
61 Detroit	8923 Inkster Rd., Taylor, MI 48180	(313) 758-6855	(313) 447-3224	(855) 528-2400	Dan Shawber	dshawber@generalinsulation.com
Fabrication Shops						
29 Northeast Spec.	21 Glenn St., Lawrence, MA 01843	(978) 688-1162	(978) 686-7570	(800) 982-6613	Ray Renaud	rrenaud@generalinsulation.com
30 Southeast Spec.	4719 Distribution Dr., Tampa, FL 33605	(813) 252-0037	(813) 248-1049	(877) 273-3100	William Myers	wmyers@generalinsulation.com
59 Springfield	2530 Columbus Avenue, Springfield, OH 45501	(937) 323-3079	(937) 324-3055	(844) 283-4734	Theresa Scott	tscott@generalinsulation.com
89 Southeast Spec. 2	1721-1731 NW 33rd St., Pompano Beach, FL 33064	(754) 800-8850	(954) 301-5860	(844) 283-4731	Don Williams	dwilliams@generalinsulation.com



Spray Foam Insulation



Foamsulate™ is our energy-efficient series of spray polyurethane foam insulation products designed for use in residential, commercial and industrial applications.

What Is Spray Foam Insulation?

Spray Polyurethane Foam (SPF) Insulation is one of the most innovative and versatile developments in construction and insulation technology in the past few decades, quickly becoming the insulation material of choice for builders, architects and homeowners.

How Does It Work?

Unlike fiberglass, cellulose or other loose fill products, our Foamsulate products can be applied with precision almost anywhere, expanding to completely fill gaps and spaces with a long-lasting solid. No matter how irregular the shape, how rough the surface or how hidden the area, Foamsulate products create an exact fit and an effective, high-quality air barrier that lasts.



50 and 50 N-IB | An Accella Brand

Light Density - Open Cell Foam

Foamsulate™ 50 N-IB is a two component, light density, one to one by volume spray applied polyurethane foam. To produce Foamsulate™ 50 N-IB requires the use of an “A” component (ISO) and a blended “B” component (RESIN), which contains ZERO ozone depleting blowing agents, catalysts, polyols, and fire retarding materials. Foamsulate™ 50 N-IB is designed for use in residential, commercial, and industrial applications.



220 | An Accella Brand

Medium Density - Closed Cell Foam

Foamsulate™ 220 is a two component, medium density, one to one by volume spray applied polyurethane foam. To produce Foamsulate™ 220 requires the use of an “A” component (ISO) and a blended “B” component (RESIN), which contains ZERO ozone depleting blowing agents, catalysts, polyols, and fire retarding materials. Foamsulate™ 220 is designed for use in residential, commercial, and industrial applications.

Spray Foam Insulation



spraytite®

Closed-Cell Spray Polyurethane Foam Insulation

158 Series (Residential) Series & 81206 Series (Commerical) Series Closed Cell Foam - Building Envelope Insulation

Spraytite® 158 and Spraytite® 81206 are two-component, closed-cell spray polyurethane foam systems utilizing an EPA-approved, zero ozone-depleting blowing agent. They are designed for use in RESIDENTIAL (Spraytite® 158) and COMMERCIAL (Spraytite® 81206) construction insulation system applications. Spraytite® 158 and Spraytite® 81206 are compatible with most common construction materials, but can only be processed with Elastospray 8000A Isocyanate.

Benefits:

- Superior insulation
- Controls moisture infiltration
- Controls air infiltration
- Non-fibrous
- Structural enhancement



enertite® NM & enertite® IB-418

Low Density - Open Cell Foam

Enertite® NM and Enertite® IB-418 are two-component, low-density, open-cell spray polyurethane foam systems designed for use in residential construction and common commercial insulation applications. Enertite NM and Enertite® IB-418 are compatible with most common construction materials, but can only be processed with Elastospray 8000A Isocyanate.

Benefits:

- Superior insulation
- Non-fibrous
- Sound control
- Enertite® IB-418 is an ignition barrier in limited-access attics and crawlspaces

Thermal & Ignition Barrier



DC 315

DC 315 is the most tested and approved product in the world for use as an, “Alternative Thermal Barrier Coating System” over Spray Polyurethane Foam (SPF). DC 315 is the only 3rd party inspected fire protective coating for SPF. DC 315 is marked and listed by Warnock Heresy Intertek W/N 20947.

Features and Benefits

- Single coat coverage reducing labor and material costs equaling higher profits.
- Industry leading spread rate.
- Passed CAL 1350 - safe for use in schools and high occupancy buildings.
- Passed strict EPA – V.O.C. and AQMD air emission requirements (for all 50 states).
- Approved for Incidental Food Contact complies with NSF/ANS1-51 requirements of USDA.
- Easily applied with a sprayer, roller, or brush with no complicated mixing.
- 1 year shelf life.
- Fast and easy clean-up, with no waste and fast turnaround time.
- Compatible with any paintable construction material.
- Meets Life Safety Code 101.
- Meets LEED’s point requirements.
- No formaldehyde.



Spray Foam Equipment



Fusion Clear Shot Gun

Benefits:

- New technology comprised of ClearShot Liquid and disposable, non-reusable Clear-Shot Cartridge
- Saves almost an hour of maintenance time each spray day
- First-ever liquid purge – reduces purge air by 75% and minimizes foam blowback
- Variable flow - an industry first
- First plural-component gun with variable flow
- Switch from large to small spray patterns in seconds
- Non-stick polymer cover keeps gun head cleaner
- Fast and simple change-outs put an end to lengthy interruptions and keep jobs on schedule



Fusion Air Purge Gun

Benefits:

- Easy air-blast tip cleaning reduces build-up and tip clogging.
- Long-lasting side seals means less downtime for maintenance
- Quick-release fluid housing - lets you easily change the mix chambers without tools
- Hand-tightened front cap – no tools needed to clean and maintain seals and mix chamber
- Ergonomic handle



Xtreme-Wrap Scuff Guard

Benefits:

- Rugged and highly durable
- No more duct taping the hose bundle
- No more snagging and ripping from rough surfaces
- Protects hose investments for longer life
- Comes standard with Graco whip hoses 246050 and 246055
- May be purchased as a kit to replace scuff guards on any existing Graco hose



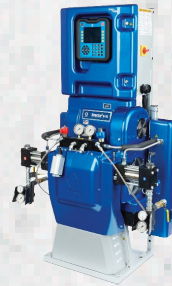
Spray Foam Equipment



Reactor 2 Stand-Alone H-30, H-40, H-50

Benefits:

- Dependability – robust, durable, longest life spray system
- Reduce downtime – allows for longer time in between required maintenance
- Increase daily productivity – capable of extremely high duty cycle
- Graco's line of hydraulic Reactors brings increased yield and high output spraying. Ideal for in-plant OEM's or applicators that spray at high volumes.



Reactor 2 E-30

Benefits:

- Compact footprint – more room in your spray rig
- Ergonomic design – easier to service
- Advanced control modules
- Better spraying performance compared to traditional electric Reactor systems
- Troubleshooting made quick and easy with QR codes



Reactor 2 E-30i

Benefits:

- Energy-saving integrated design
- Graco InSite Remote Reporting Technology
- Inlet pressure and temperature sensors
- Stores up to 24 chemical recipes
- Easy-to-see drum level indicators
- New multi-zone heater control module
- Brushless DC motor
- On-screen QR codes for faster troubleshooting information
- Extreme-Wrap scuff guard
- Hydrovane tankless air compressor (optional)
- Refrigerated air dryer (optional)



Fiberglass Insulation



EcoFill™ Wx Glasswool Blowing Insulation

Knauf EcoFill™ Wx Glasswool Blowing Insulation is an unbonded, virgin fibrous glass blowing insulation designed with optimal thermal properties and excellent coverage and blowing characteristics. EcoFill™ Wx is installed in both side-walls and open attics of existing structures.

Benefits:

- Excellent thermal properties
- Superior air flow resistance
- Excellent coverage per bag
- Energy conservation
- Noise reduction
- Non-corrosive
- Resists microbial growth
- Easier installation
- Meets toughest indoor air quality standards in the industry.



ECOBATT™ Fiberglass Batt

bonded with nature

Knauf Insulation EcoBatt Insulation are thermal and acoustical products made from highly resilient, inorganic glass fibers bonded by a thermosetting resin. The products are available unfaced or with kraft, foil, or flame-rated FSK-25 (Foil-Scrim-Kraft) foil facings.

In addition, High Density (HD) Batts and Staple-Free Batts are available.

Benefits:

- Sustainable
- High recycled content
- Thermally efficient
- Excellent acoustical performance
- Legendary handling



Cellulose

515 Low Dust (LD) Cellulose Insulation

Compare GreenFiber® 515LD Compared to 510LD:

- Increased square foot coverage per bag
- Installed square-foot cost remains the same
- Handle fewer bsgs per job
- Increased load efficiency
- Underwriter Laboratories (UL) tested and approved.



765 Low Dust (LD) All-Borate Insulation

The benefits of GreenFiber's 765LD All-Borate insulation yields similar attic coverage advantages as the 515LD



Cellulose Insulation

Benefits:

- Energy Savings
- Fire Resistance – cellulose fibers treated with non-toxic fire retardant
- Sound Dampening
- Environmentally Friendly – 85% recycled newsprint



Cellulose Insulation

Benefits:

- Superior energy savings and sound control.
- First cellulose insulation product to be evaluated and verified by the ICC-ES SAVE Program
- Environmentally Friendly – 84% recycled content



Krendl



475 Electric Machine

Features and Benefits

- Usage: DIY/Rental
- Style: Airlock
- Material: Fiberglass, Cellulose
- Production Rate: 700 lbs/hr 2100 lbs/hr
- Hopper Capacity: 12.5 cu. ft./ .35m3



575 Electric Machine

Features and Benefits

- Usage: Professional Contractor
- Style: Airlock
- Material: Cellulose/ Mineral Fiber/ Fiberglass
- Production Rate: 2600-2800 lbs/hr /2500-2700 lbs/hr/ 800-1000 lbs/hr
- Hopper Capacity: 14 cu. ft. (.39 m3)
- Loading made easy w/ built in convertible tray



2300 Electric Machine

Features and Benefits

- Usage: Professional Contractor
- Style: Airlock
- Material: All Fiber
- Production Rate: Cellulose 3,000 lbs(1360 kg)/hr /Fiberglass 1000 lbs(454 kg)/hr
- Hopper Capacity: 40 cubic feet (1.13 cubic meters)



2800-G Gas Machine

Features and Benefits

- Usage: Professional Contractor
- Style: Airlock
- Material: Cellulose / Fiberglass
- Production Rate: 3600 lbs/hr (1633 kg/hr) 2100 lbs/hr (953 kg/hr)
- Hopper Capacity: 40 cu. ft. (1.75 m3)



GV230 Belt Driven

Features and Benefits

- Usage: Professional Contractor
- Style: Recycle
- Material: All Blown Insulations
- Production Rate:
- Hopper Capacity: N/A



GV180 Gas Powered Vacuum

Features and Benefits

- Usage: Professional Contractor
- Style: Recycle
- Material: All Blown Insulations
- Production Rate: 7,000 lbs/hr 3,175 kg/hr
- Hopper Capacity: N/A



Mineral Wool

ROXUL®
The Better Insulation™

Roxul Comfortbatt™ Mineral Wool Batts

ROXUL COMFORTBATT is a mineral wool insulation product for use in both new residential construction and renovations. This product is specifically engineered for use in exterior walls, cathedral ceilings, attics, basement walls, exposed floors, and heated crawl spaces.

Features and Benefits

- Easily cut
- Non-combustible
- Excellent sound absorbancy
- Does not rot
- Does not promote growth of fungi or mildew
- Low moisture sorption
- Chemically inert; non-corrosive
- Water resistant
- CFC-and-HCFC free, product and process
- Mde from natural & recycled materials
- ROXUL can contribute to earning LEED® points.



Roxul AFB® Acoustical Fire Batts

Roxul AFB (Acoustic Fire Batt) is a lightweight, semi-rigid batt insulation specifically designed for steel stud interior wall and floor applications. This mineral wool-based insulation is made from natural stone and recycled content. It's a sustainable product that provides superior sound absorbency and fire protection for overall occupant comfort and safety. That's why AFB is quickly becoming the insulation of choice for today's green builders in commercial and industrial construction.

Features and Benefits

- Easily cut
- Non-combustible
- Excellent sound absorbancy
- Chemically inert
- Does not rot or sustain vermin
- Does not promote growth of fungi or mildew
- Low moisture sorption
- Water resistant
- CFC-and-HCFC free, product and process
- Mde from natural & recycled materials



Rigid Insulation

STYROFOAM™ Brand Square Edge Insulation (XPS)

This Extruded Polystyrene Foam (XPS) insulation helps protect foundation damp-proofing and waterproofing, especially during backfilling. It also provides a secondary barrier against groundwater leakage. Freeze-thaw cycling of the foundation wall is minimized, reducing the potential for cracking.



TUFF-R™ and Super TUFF-R™ Commercial Insulation

These polyisocyanurate insulation products consist of a patented, high-insulating-value, closed-cell polyisocyanurate foam core sandwiched between a choice of durable, exterior facers. TUFF-R™ insulation products can be used in commercial interior wall construction behind a minimum 1/2" gypsum board or equivalent thermal barrier interior finish.



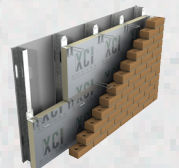
THERMAX™ Sheathing

A rigid foam insulation that effectively reduces condensation for exceptional moisture protection. Designed to have a Class A fire rating and can be used in a range of concealed and exposed applications, above and below grade. Because of the improved fire performance it is best suited for hourly rated assemblies. It has nominal 1.0 mil, smooth aluminum foil facers on both sides.



POLYISO

Polyiso can be installed on both commercial and residential structures, on the roof or in the wall. It's lightweight, cost-effective and provides outstanding return on investment with significant energy savings



Extruded Polystyrene Insulation (XPS)

An R-Value of 5.0 per inch of thickness makes it an excellent thermal insulator that increases the energy efficiency of your structures. Ideal for a variety of applications, including below slab, below grade along the foundation, inside basement walls, exterior insulation over wood sheathing, and residing.



Low-Pressure Spray Foam



FROTH-PAK™ Systems



FROTH-PAK™ Polyurethane Foam Systems are ready to quickly and professionally fill your needs. FROTH-PAK™ foam is a two-component, quick-cure polyurethane foam that fills cavities, penetrations and cracks for air sealing, insulation, sound damping, structural stabilization and more. Designed for mobility and ease of use, FROTH-PAK™ foam is an ideal choice for penetrations greater than 2”.

FROTH-PAK™ foam ...

- Adheres to many surfaces, including wood, metal, glass and most plastics
- Becomes tack-free in less than a minute
- Cures in minutes, depending on temperature, foam thickness and specific nozzle
- Comes with flexible, pre-attached hoses for quicker start-up
- Kits have a temperature indicator to help assure maximum product performance

Advantages of Dow FROTH-PAK™ Systems

- All-in-one insulation and air sealant that helps prevent air infiltration, moisture intrusion and much more
- Chemically cured, reducing curing time
- Patented anti-crossover nozzles –widest selection available in the industry today
- Self-contained kits and refillable canisters
- Variety of convenient sizes for smaller jobs and larger use demands
- Low maintenance and parts replacement costs
- Portable with no mixing, set-up or warm-up necessary



Low-Pressure Spray Foam



Touch 'n Seal Foam Kit FR Standard 1.75 PCF

Two-component, closed cell, ASTM E-84 Class A Fire Resistance

15R Fire Retardant 4004520015 1.75 PCF	110F Standard Formula 4004520110 1.75 PCF	200F Standard Formula 4004520200 1.75 PCF	600R Standard Formula 4004520600 1.75 PCF
---	--	--	--



Touch 'n Seal Foam Kit FR ICC 1.75 PCF

Two-component, closed cell, ICC evaluation services ESR-3052

200R Fire Retardant 4004520200 1.75 PCF	600R Fire Retardant 4004520600 1.75 PCF
--	--



Touch 'n Seal Ignition Barrier Coating

Intumescent water-based coating, meets building code requirements for alternate ignition barriers, complies with ICC-ES AC377 App X (modified NFPA 286 test), 5-gal pail



Touch 'n Seal Disposable Foam Kits

Two-component, ready-to-use, portable, easy to carry Rip 'n Go handle



Touch 'n Seal Refill Systems

1.75 PCF refills in Standard, ICC, and Slow Rise



Quick Cure Cylinders - High Volume Applications

Available in High-Yield (HY) and Reduced Expansion (RX) formulas, includes hose and wands, 10 lb and 16 lb avai



Constant Pressure Dispensing System



CPDS Series 2 - Affordable System for High Volume

Features and Benefits

- Ideal for business start-up or service expansion
- Ideal for mid-sized projects, rehabs & renovations, repairs, room additions and “call backs”
- Commonly available replacement parts
- 2X faster foam delivery and up to 20% greater yield than disposable foam kits
- Virtually no chemical waste. Economical - lower cost per board foot than kits



CP-750 Two Component Foam Kit

Features and Benefits

- Suitable for use in commercial, residential, agricultural, marine, transportation and many other applications.
- Use in new, retrofit and renovation applications.
- Provides increased structural strength/support, sound and thermal insulation, and stops energy robbing air infiltration, thus reducing energy consumption.



CP-1000 Two Component Foam Kit

Features and Benefits

- Easy to Transport
- Two Cylinders (Components A & B)
- Anti-Crossover Foam Applicator with 15' Hoses
- Extra Nozzles (5 Conical; 5 Fan)
- Includes: Chemical Resistant Gloves, Assembly Wrench, O-Ring, Petroleum Jelly



Spray Foam Nozzles

Features and Benefits

- Conical (white) nozzles produce a focused spray pattern for more precise application. These are provided in most spray foam kits.
- Fan (yellow) nozzles produce a wider spray pattern for more coverage. These are also provided in most spray foam kits.
- Injection (black) nozzles are used exclusively with Slow Rise formulas.



Gun Foam Sealants



PRO™ Window & Door Insulating Foam Sealant

Features and Benefits At a Glance

- Meets ASTM E2112 Standards
- Low pressure-build formulation at 0.13 psi; 0.90 kPa (average) (gun foam) per AAMA 812-04
- When properly installed is proven not to bow or distort frame
- Expands to take the shape of gaps, creating a long-lasting, airtight, and water-resistant seal
- Helps to maximize energy efficiency
- Binds to vinyl, metal, wood, and composite surfaces
- Repels and deflects water
- Tack-free in 3-10 minutes, trims in 60 minutes
- Fully cured in 8 hours
- UL classified
- One 20 oz can (gun applied) foams 16-18 average sized residential windows



PRO™ Gaps & Cracks Insulating Foam Sealant

Features and Benefits At a Glance

- Meets ASTM E2112 Standards
- Low pressure-build formulation at 0.13 psi; 0.90 kPa (average) (gun foam) per AAMA 812-04
- When properly installed is proven not to bow or distort frame
- Expands to take the shape of gaps, creating a long-lasting, airtight, and water-resistant seal
- Helps to maximize energy efficiency
- Binds to vinyl, metal, wood, and composite surfaces
- Repels and deflects water
- Tack-free in 3-10 minutes, trims in 60 minutes
- Fully cured in 8 hours
- UL classified
- One 20 oz can (gun applied) foams 16-18 average sized residential windows



Gun Foam Sealants



Tytan Window & Door PRO Gun Foam Sealant

Tytan Window & Door PRO is AAMA approved and offers superior yield and R-Value. It is specifically formulated to not bow your window or door frames while also being rigid enough to expand and contract with construction and climate changes while maintaining a strong and durable seal.



Tytan Fire Block PRO Gun Foam Sealant

Tytan Fire Block PRO meets or exceeds all essential residential fire blocking requirements and standards. It has been evaluated per ICC-ES Report ESR-3302 and is orange in color for easy inspection recognition. Tytan Fire Block can be used on gaps and cracks of all sizes and will provide a strong, airtight seal which will provide valuable minutes in the event of a fire.



Tytan Fill All PRO Gun Foam Sealant

Tytan Fill All PRO fills gaps & cracks from 1/4"- 3" with a strong seal that resists construction and climate changes. It is a Smart Foam, which means it will not over-expand or shrink.



Gun Foam Sealants



Gun Foam II - Air Sealing and Fire Block

Features and Benefits

- Type V Residential fire block sealant
- Distinctive orange color
- Class A fire resistance
- Tack-Free/Dry Time - 10 minutes
- Full Cure Time - 1 hour



All Seasons - Low Temperature Applications

Features and Benefits

- Suitable for use at temperatures as low as 20°F
- Type V Residential fire block sealant
- Low curing pressure - can be used to seal windows and doors
- ICC-ES ESR-1926 approved
- Class A fire resistance
- Tack-Free/Dry Time - 10 minutes
- Full Cure Time - 1 hour



No Warp Foam - Sealing Windows and Doors

Features and Benefits

- Low expansion and pressure during cure for sealing windows and doors (AAMA 812-04)
- ICC-ES ESR-1926 approved
- Class A fire resistance
- Tack-Free/Dry Time - 12 minutes
- Full Cure Time - 1 hour



Black Foam - Polyurethane Foam Sealant

Features and Benefits

- Black color for RV and landscaping applications
- Formulated to resist discoloration in exterior applications
- Class A fire resistance
- Tack-Free/Dry Time - 10 minutes
- Full Cure Time - 1 hour



Gun Foam Cleaners

TYTAN Foam Cleaner

Features and Benefits

- Removes uncured foam
- Keeps gun working efficiently and effectively
- Spray nozzle feature
- May be used as universal cleaner
- Breaks down all uncured polyurethane materials
- Cleans uncured polyurethane materials
- Clean and maintain guns
- Extends life of gun



Touch 'n Seal Poly-Clean Foam Cleaner

Features and Benefits

- A zero VOC polyurethane foam cleaner
- Cleans wet foam from hands, tools, and applicator guns
- Attaches directly to applicator basket to flush barrel
- Nozzle allows spray directly from can



BOSS PRODUCTS 335 Gun Foam Cleaner

Features and Benefits

- Specially developed to clean the PU foam applicator guns.
- A correct cleaning of the gun and the proper use of the product will ensure an optimal function and prevent blockage of the applicator gun.
- Suited for cleaning of the valve and spray nozzle of PU foam cannisters and removing uncured PU foam.



Low-Pressure Foam Guns



Caulking, Sealants, & Adhesives

BOSS
PRODUCTS

125 Multi-Seal® Building Construction Sealant

Features and Benefits

- VOC compliant in all 50 States
- Paintable with most latex paint
- Non-yellowing and non-staining
- Paintable under an hour
- Bonds to wet, damp surfaces



BOSS
PRODUCTS

357 Painters Latex Caulk

Features and Benefits

- Designed for interior and exterior use.
- Cures to form a flexible, nonyellowing seal without staining or bleeding and is compatible with a wide variety of substrates.
- Use around windows, door frames, baseboards or any joint or gap where a weather-tight seal is required.



BOSS
PRODUCTS

380 Contractors Silicone Sealant

Features and Benefits

- Suitable for general construction applications
- Provides weatherproof and waterproof seal
- Resists ozone, UV radiation and temperature extremes
- Fills and seals gaps around windows, doors, vents, fixtures and lights
- Custom colors available upon request



BOSS
PRODUCTS

387 Universal Silicone

Features and Benefits

- An excellent general-purpose silicone
- Weather proof seal
- Seal Windows, Doors and Gutters
- Permanently flexible (-60°F to 400°F)



BOSS
PRODUCTS

635 Contact / Spray Adhesive

Features and Benefits

- Bonds fabric, plastics, felt, cork, foam, insulation, paper, corrugated, wood, most metals, and more.
- VOC compliant, nonchlorinated, fast drying, high strength, web spray, formulated with high solids



Reflective Insulation



AA2 Vapor Shield Reflective Insulation for Masonry Walls

Fi-Foil's AA2 Vapor Shield is an insulation solution used on furred-out masonry walls. AA2 is remarkably easy to install and effective in improving building performance and comfort.



VR Plus Shield Reflective Insulation - Multi-Layer for Masonry Walls

Fi-Foil's VR Plus Shield is a multi-layer reflective insulation solution used on furred-out masonry walls. This unique insulation has multiple layers that separate when installed to create three reflective air spaces, with R-values up to R-7.1 on 1.5" furring.



HY-Fi Hybrid Insulation System

Fi-Foil's HY-Fi is a hybrid insulation product that provides a very cost-effective approach to creating high R-value walls. HY-Fi provides insulators and builders with a versatile, low cost, and easy to install hybrid system that achieves R-21 in small wall spaces.



M-Shield Reflective Insulation for Masonry Walls

Fi-Foil's M-Shield insulation is used on furred-out masonry walls. M-Shield is designed to resist mold growth by combining a synthetic polymer facing on premium grade aluminum foil. With third-party verified code compliance plus an industry leading 10-year transferrable warranty, in more humid climates, M-Shield is a smart choice to insulate all your masonry buildings.



Insulation Accessories



Insulweb®

Insulweb® is your go-to fabric whether you are damp spraying or dense packing cellulose, blowing or loose-filling fiberglass or any similar application.

Recognized as the premier product in the industry for all types of wet and dry blown insulation, Insulweb® achieves superior performance through excellent fiber strength and random web formation. Dry or wet, cellulose or fiberglass - Insulweb® is versatile enough to handle the job. Even dense-packing is a breeze when you use Insulweb® - the product installers have been requesting for well over a decade.



Insuloc™

Insuloc™ is your choice for loose-fill applications.

Used for all dry blown-in applications, the fine fiber structure of Insuloc™ helps reduce fiber migration.



Insulpac™

Insulpac™ insulation recovery bags make clean up a breeze. The Insulpac™ line of professional grade vacuum bags are designed to be used in conjunction with industrial insulation collection and disposal equipment. Insulpac™ bags are high strength with good air porosity to ease clean up



Accessories



Knives

We stock retractable utility knives and replacement blades as well as batt knives.



Plugs - Wood & Foam



Vacuum Bags & Poly Sheeting



Staples & Staplers

Standard, hog ring, and pneumatic staples and guns.



Accessories

TENMAT Recessed Light Covers



Fire-resistant enclosure that is specifically designed to protect light fixtures from insulation in the attic and to stop unwanted airleakage through your recessed light.
Available sizes: Internal Height - 10 3/4" and 16 1/2"

CanCoverIt™ Recessed Light Covers



Universal Series Specifications

External Dimensions: 14"L x 14"W x 22"H

Internal Dimensions: 13"L x 13"W x 21.5"H

Packaged Dimensions: 14"L x 2.5"W x 22"H

Fits typical 6" Can Fixture and up to 7" max. Can Diameter

Low Profile Series Specifications

External Dimensions: 14"W x 14"W x 12"H

Internal Dimensions: 13"W x 13"W x 11.5"H

Packaged Dimensions: 14"W x 2.5"W x 15"H

Fits typical 6" Can Fixture and up to 7" max. Can Diameter

Insulation Supports

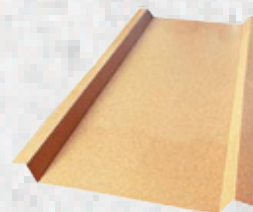


Available sizes: 12", 16", 24"

Attic Venting

Oh Shutes Cardboard Vent Chutes

Oh Shutes are cardboard ventilation chutes, waxed on one side, help keep air flowing up and out through roof vents, protecting insulation and walls from moisture. They measure 24"x 50" and come unfolded. 600 pcs per pallet. Oh Shutes also offers a die cut chute with built-in stop, uncoated or with heavy wax coating (for 24" framing only).



Corrugated Cardboard Vents

Lightweight, easy to install, and provide excellent air flow.

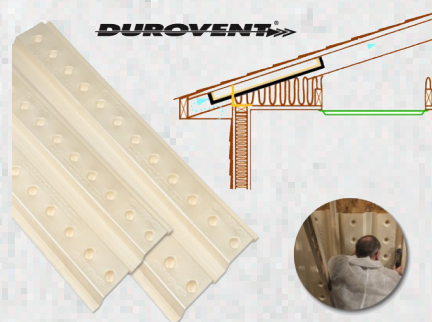


Durovent® Polystyrene Vents

Durovent® - the Number ONE selling vent in the industry! The polystyrene material provides a lightweight water resistant air channel and is ideal for high-volume new construction or lower cost re-insulation.

Features and Benefits

- An economical way to meet energy code requirements for air flow
- Multiple lengths and perforated center line to fit all applications
- Wide nailing flange and center strut allows for easy installation
- Net free vent: 18.7 sq in



AccuVent® & AccuBlock® Roof Ventilation Systems

Designed for various roof ventilation applications, AccuVent® & AccuBlock® systems create a soffit boundary to manage airflow, protect insulation layers, and eliminate insulation drift.



Tapes

3M™ Venture Tape™ 1520CW Cold Weather Foil Insulation Tape

Features and Benefits

- A 2 mil (50 micron) aluminum foil tape for improved vapor sealing of fiberglass ductboard, ductwrap and FSK systems.
- Superior quick stick at normal temperatures with low temperature performance at freezing (32°F or 0°C).
- Recommended for use at normal and high temperatures also.



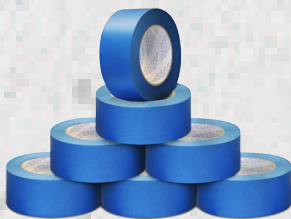
3M™ Venture Tape™ 1581A-CW Duct Board Tape

Features and Benefits

- Features and Benefits
- A printed 2 mil (50 micron) aluminum foil ductboard insulation tape for vapor sealing sheet metal ducts and taping fiberglass ductboard & flexible duct.
- Heavy duty, high strength, acrylic adhesive system.
- Superior adhesion and conformance for fibrous ductboard systems.



Duct Tape & Blue Painters Tape



Safety



Coveralls

Heavy/Light Duty; Collar, Hood, Head Socks, Boots Available



Glasses

We can get any safety product you need.

Just ask!



Hard Hats



Safety Harnesses & Back Support Belts



Fresh Air Intake Masks & Full Face Respirators



Reflective Vests



Gloves

Cut Resistant, Impact, Cowhide, Latex, Nitrile, Cotton



Gang Boxes

Ladders & Scaffolding



Steel Portable Scaffolding



SRS-72 6 ft Steel Rolling Scaffold; SRS-72CA 6 ft Steel Rolling Scaffold;
SRST-72AZ Steel Rolling Scaffold with Trapdoor

F/G Stepladders



6208 8 ft Type IA Fiberglass Step Ladder; 6208CA 8 ft Type IA Fiberglass Stepladder; 6208AZ Fiberglass Single Sided Stepladder 135kg 8-Step

F/G Extension Ladders



D6224-2 24 ft Type IA Fiberglass D-Rung Extension Ladder; D6224-2CA 24 ft Type IA Fiberglass D-Rung Extension Ladder; D6224-2AZ 3.6 m/6.4 m Fiberglass D-Rung Extension Ladder 135kg

Aluminum Extension Ladders



D1524-2 24 ft Type IA Aluminum D-Rung Extension Ladder; D1524-2CA 24 ft Type IA Aluminum D-Rung Extension Ladder

Spray Foam Rigs

General Insulation offers both standard and customizable options for any size spray foam rig. Please contact your local sales representative to inquire about your next spray foam rig!



This is just one example of the many configurations we offer!





GENERAL

INSULATION COMPANY, INC.

**Pushing Limits to be Your Distributor of Choice
for Over Eighty-five Years.**